

WILDCAT

80



Digitized by the Internet Archive
in 2013

<https://archive.org/details/wildcat1960pear>



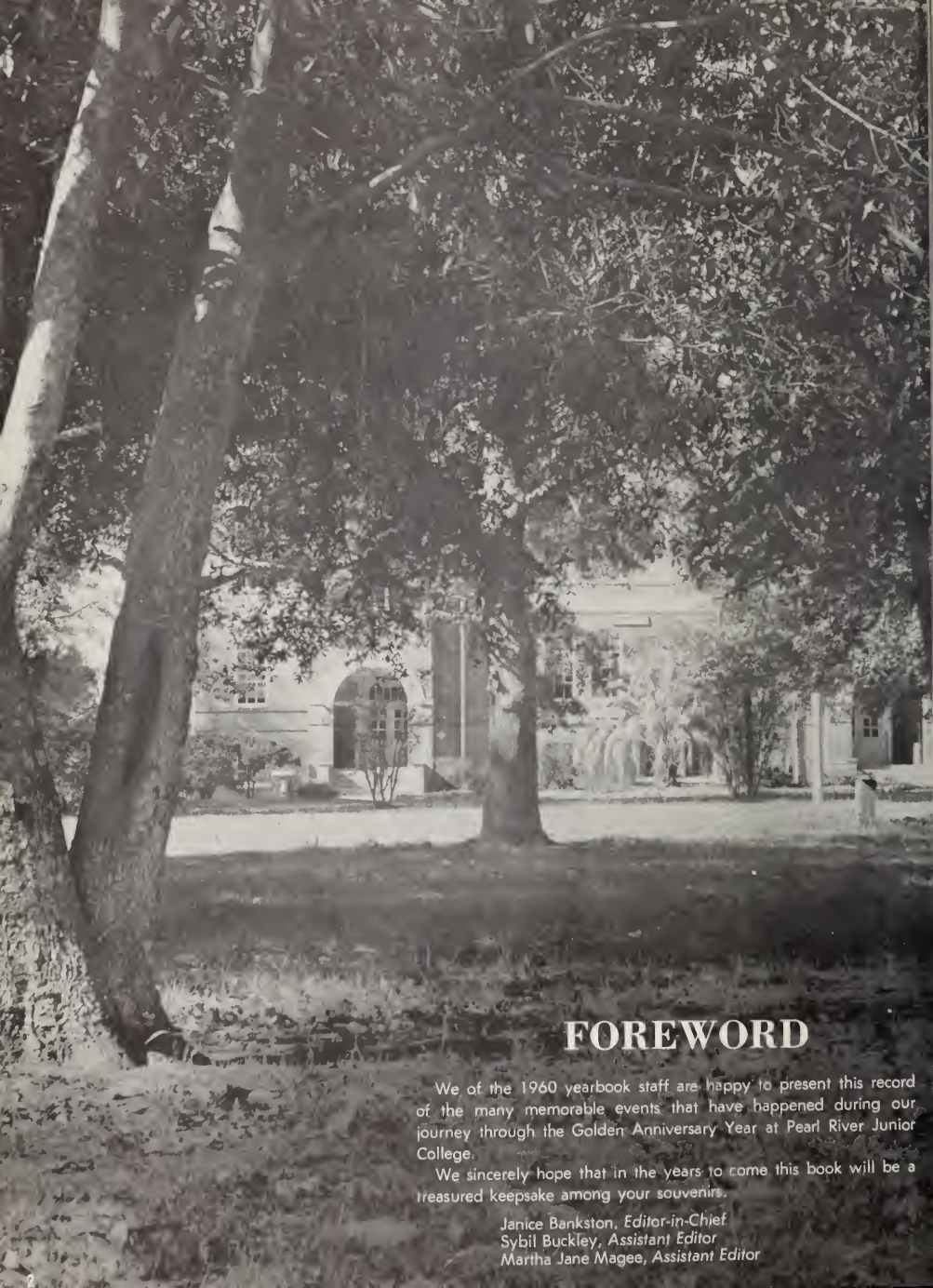


WILDCAT 1960

Published by the Students
of

PEARL RIVER JUNIOR COLLEGE

Poplarville, Mississippi



FOREWORD

We of the 1960 yearbook staff are happy to present this record of the many memorable events that have happened during our journey through the Golden Anniversary Year at Pearl River Junior College.

We sincerely hope that in the years to come this book will be a treasured keepsake among your souvenirs.

Janice Bankston, *Editor-in-Chief*
Sybil Buckley, *Assistant Editor*
Martha Jane Magee, *Assistant Editor*



DEDICATION

To our President, Garvin H. Johnston, who has fulfilled the obligation of promoting higher standards of scholarship and citizenship for the students of Pearl River Junior College, we proudly dedicate this Golden Anniversary Edition of the Wildcat.

The Staff

OUR CAMPUS



MOODY HALL



PRESIDENT'S HOME





ADMINISTRATION



METAL LAB

ACADEMIC BUILDINGS



MUSIC AND ART



SCIENCES



DORMITORIES



THE JOHNSTON FAMILY



THE GRADUATES' TEA



STUDENTS ENJOY THE RECREATION HALL



LIFE AROUND THE CAMPUS







BOARD OF TRUSTEES



SEATED, left to right: J. E. Mitchell, Jason Lee, A. O. Amacker, A. H. Knight, Aubrey Lowe, E. E. Breland, S. P. Powell. STANDING, left to right: Dennis Fortenberry, Inman Rawls, Everette Eaton.

HANCOCK COUNTY

Kenneth McCarty**
E. E. Breland***
S. P. Powell

JEFFERSON DAVIS COUNTY

Dennis Fortenberry
John Bynum*
Hugh Cole**

LAMAR COUNTY

Malcolm Anderson**
Jason Lee***
Everette Eaton

MARION COUNTY

**Garvin H. Allen
**Frank Fortenberry

PEARL RIVER COUNTY

**A. S. Davis*
Aubrey Lowe
J. E. Mitchell
**W. O. Moody
Harry B. Sones**
A. H. Knight
Inman Rawls
A. O. Amacker***

* Deceased

** Not Pictured

***Term Expired January, 1960

**** Term began January, 1960



PRESIDENT'S MESSAGE

For the past fifty years this institution has provided educational opportunities to the people of this area. The Homecoming Program this year celebrated these fifty years of educational service.

We express to the Yearbook Staff our appreciation for making available to us the record of this year.

Garvin H. Johnson

ADMINISTRATION



ROBERT L. JOHNSON
Dean and Registrar



MARVIN R. WHITE
Principal and Mathematics

The Administrators of Pearl River Junior College have encouraged the students to uphold the high standards of our democratic institution.



T. D. HOLDEN
Athletic Director
Dean of Men



MISS LOYETTE WEBB
Dean of Women



MISS CLARA CHALMERS
Assistant Dean of Women

FACULTY

The members of the Faculty have labored endlessly to enrich our lives with the treasures of knowledge.

Their endeavors will be appreciated even more in the years to come.



JOHN L. ANDERSON
Surveying

ROBERT ANDERSON
Agriculture

MISS THELMA BATSON
Voice and Piano

EUGENE BENVENUTI
Social Studies



MISS MAGGIE BERRY
Home Economics

MISS DIXIE B. CLANTON
English

JOSEPH G. ELLO
Band

MRS. T. P. FORNEA
English and French

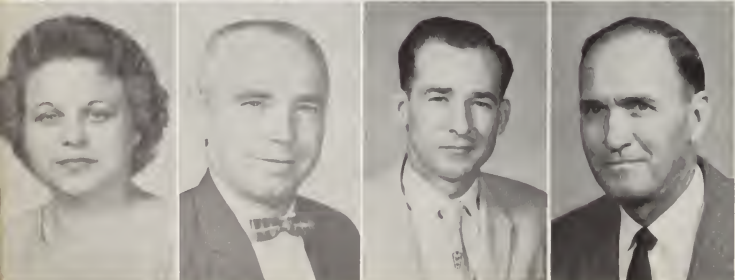


JACK GALLAGHER
Physical Education and Coach

J. A. GRANT
Mathematics and Science

ARTHUR J. HIGMON
Art and Journalism

MRS. EARLORA HOLDEN
Business Education



MRS. DAHLIA HUNT
Social Studies

PHILLIP HUNT
Industrial Arts

ROY JONES
Automobile Mechanics

A. M. McBRIDE
Agriculture

MRS. A. M. McBRIDE
Study Hall
Not Pictured

GRAHAM McDONALD
Science

MISS EUNICE McSWAIN
English

MISS MARY RUTH MANGUM
English and Speech

KENNETH MARTIN
Business Education

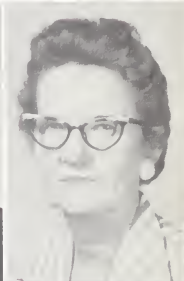


GEORGE V. MOODY
Mathematics

LEWIS MURRAY
Assistant Coach

D. C. PHILLIPS
Industrial Education

MRS. HAZEL POLK
Librarian



MRS. EVELYN ROGERS
Cosmetology

ENOCH SEAL, JR.
History

MRS. DOLORES SMITH
Business Education

T. G. STRINGFELLOW
Cabinet Making



M. J. TIERNAN
Science

MISS LULA WEBB
Mathematics

R. J. WHEAT
Auto Mechanics

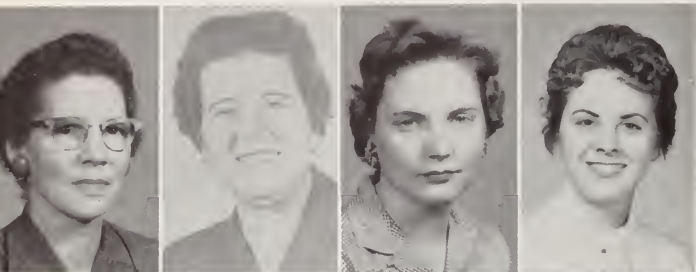
RUSSELL SINQUEFIELD
Construction Trades



Picture
Not
Available



STAFF ASSISTANTS



MRS. LUCILE BASS
Secretary to President

MISS ANNE DANDRIDGE
Business Manager

MRS. DORIS HOWARD
Secretary to Dean
and Registrar

MISS CHARLOTTE LOTT
Director of String of Pearls



MRS. S. J. MILLER
Dietitian

MRS. PAULINE SHILL
Assistant Bookstore
Manager

MRS. LOUISE SMITH
Bookstore Manager

MISS PEARL SMITH
School Nurse



SOPHOMORE CLASS

*"Life is my college.
May I graduate well, and
Earn some honors."*

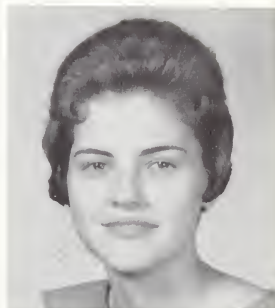
Louisa May Alcott



JANE E. FORTENBERRY
Secretary-Treasurer



JOHN W. RAINEY
President



CAROLYN S. LADNER
Student Council Representative



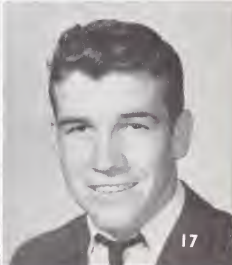
GEORGE R. DALE
Vice-President

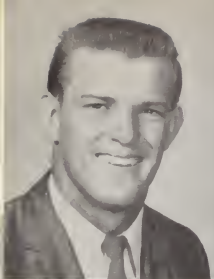
PAUL JOSEPH ALEXANDER
St. Amant, Louisiana
Physical Education
Football 1, 2; Newman Club 1, 2.

JESSIE DONALD ALLGOOD
Columbia, Mississippi
Pre-Veterinarian
Glee Club 1; Agriculture Club 1, 2; Wesley Foundation 1, 2;
Entre Nous 2.

LOUIE DARWIN ANDERSON
Columbia, Mississippi
Agricultural Education
Glee Club 2.

ROBERT REX APPLEWHITE
Bassfield, Mississippi
Pre-Medicine
Entre Nous 2.





PERRY LAVON BAGGETT

Columbia, Mississippi
Religious Education

Student Council, Officer 2; Class Officer 1; Campus Brotherhood, Officer; Football 1, 2; Debate Team 1, 2; Dixie Drawl 2; Glee Club 1, 2.

DANIEL OWEN BAKER

Leetown, Mississippi
Pre-Engineering

Phi Theta Kappa, Officer 2; Wildcat Staff 2.



JANICE LOUISE BANKSTON

Clermont Harbor, Mississippi
English

Woman's Student Government, Officer 2; Y.W.A., Officer 2; Phi Theta Kappa 1, Officer 2; Wesley Foundation, Officer 1, 2; Representative 1, 2; Entre Nous, Officer 2; Wildcat Staff 2; Officer; Dixie Drawl 1; Glee Club, Officer 1, 2; Ensemble 2; Speech Club 1, 2; M.E.A. 2.

HAYWARD ROY BARRETT

Carson, Mississippi
Agriculture

Agriculture Club 1, 2; Dixie Drawl 1, 2; Glee Club 1.



WILLIAM GRANT BARRETT

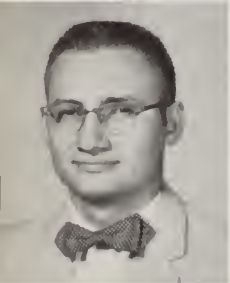
Picayune, Mississippi
Chemistry

Baseball 1; B.S.U. 1, 2.

CAROL ANN BOND

Poplarville, Mississippi
Secretarial Science

F.B.L.A. 1, 2; Y.W.A. 1, 2; B.S.U. 1, 2; Wildcat Staff 2.



ROBERT EUGENE BROOME

Bassfield, Mississippi
Accounting

MARY FRANCES BROWN

Lumberton, Mississippi
Home Economics

Band 1, 2; Orchestra 2; Home Economics Club 1, Officer 2; Dixie Drawl 2; Girls' Ensemble 1, 2; Wildcat Staff 2; Y.W.A. 1, 2; B.S.U. 1, 2.



SYBIL NELLIE BUCKLEY

Oakvale, Mississippi
Elementary Education

Phi Theta Kappa 2; Wildcat Staff, Officer 2; Y.W.A. 2; Dixie Drawl 1; B.S.U. 1, Officer 2; N.E.A., Officer 2.

OTTIS RAYMOND BULLOCK

Columbia, Mississippi
Engineering

Glee Club 1, 2; Brotherhood 1, 2.

VAN HOLLIS BYRD
Lumberton, Mississippi
Mathematics

KAY PERRE CABELL
Bay St. Louis, Mississippi
Elementary Education
Newman Club 1, 2; Officer 2; Wildcat Staff 2.



WILLIAM D. CAGLE
Purvis, Mississippi
Automotive Technology

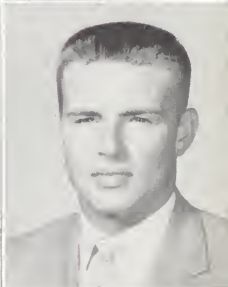
EDWIN ELAND CAMERON
Purvis, Mississippi
Pre-Engineering
Boxing 1; Dixie Drawl 2.



JOE CARROLL CHANCE
Monticello, Mississippi
Music Education

Band 1, 2; Officer 2; Glee Club 1, 2; B.S.U. 1, 2; Orchestra 1, 2.

JOHNNY CLEVELAND CHANCE
Monticello, Mississippi
Drafting
Band 1, 2.



HENRY EDWARD CONERLY
Kokomo, Mississippi
B.A. Preparatory

B.S.U. 1, 2, Officer 2; Brotherhood 1, 2, Officer 2; Entre-
nous 1, 2, Officer 1, 2.

CHARLOTTE AUGUSTA COOK
Purvis, Mississippi
Elementary Education

Band 1, 2, Officer 2; Orchestra 2; Y.W.A. 1, 2; Wesley
Foundation 1, 2; Glee Club 1.



ELMER RAE COOK
Columbia, Mississippi
Physical Education

Football 1, 2; Basketball 1, 2; Student Council 1, 2; Brother-
hood 2.

RUBY NELL COOK
Columbia, Mississippi
Secretarial Science

Woman's Student Government 1; Y.W.A. 1, 2, Officer 2;
F.B.L.A. 1, 2, Officer 1, 2; Wildcat Staff 2; B.S.U. 1, 2.





LARRY PRENTISS CRAIN

Franklinton, Louisiana

Drafting

Wildcat Staff 2.

LLOYD ANTHONY CUEVAS

Bay St. Louis, Mississippi

Chemical Engineering

Newman Club 1, 2, Officer 1.



GEORGE RANKIN DALE

New Hebron, Mississippi

Education

B.S.U. 1, 2, Officer 2; Who's Who 2.

LEROY DAUGHDRILL

Poplarville, Mississippi

Bachelor of Science Preparatory



GEORGE O. DAVIS

Poplarville, Mississippi

Mechanical Drawing

Band 1, 2; Orchestra 1, 2.

KAREN HARRIS DAVIS

Carriere, Mississippi

B.S. Preparatory

Wildcat Staff 2; Y.W.A. 1, 2.



MARY FRED DAY

Poplarville, Mississippi

Elementary Education

Wesley Foundation 1, 2; Woman's Student Government 2;

Who's Who 1; Cheerleader 1, 2; Wildcat Staff 2.

PEGGY BISHOP DYAR

Prentiss, Mississippi

Elementary Education

B.S.U. 1, 2, Officer 2; Wildcat Staff 2; Dixie Drawl 1;

Y.W.A. 1, 2.



EMORY FORD EASTIN

Picayune, Mississippi

Agricultural Education

Band 1, 2; Wesley Foundation 1, 2, Officer 2; Agriculture

Club 1, 2, Officer 2.

TOMMY GENE EZELL

Mobile, Alabama

Business

Football 1, 2; Who's Who 2; Baseball 1, 2.

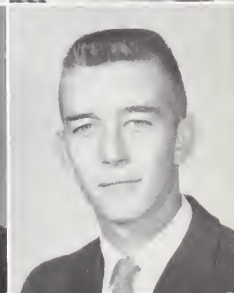
WARREN EDEL FLYNT
Bogalusa, Louisiana
Pre-Dental



JANE EVELYN FORTENBERRY
Foxworth, Mississippi
Secondary Education

Wesley Foundation 1, 2; Y.W.A. 2; Biology Club 1, Officer 1;
Class Officer 2; Phi Theta Kappa 1, 2, Officer 2.

LOUIS MARION FORTENBERRY
Bassfield, Mississippi
Education



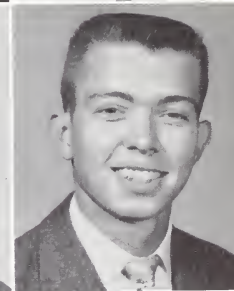
DAVID LEON FOY
Oak Grove, Mississippi
Pre-Engineering

JERRY LEO GARRIGA
Pass Christian, Mississippi
Chemical Technology
Newman Club 1, 2.



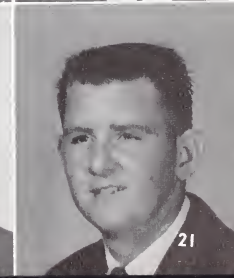
NORMAN DOYLE GERALD
Hattiesburg, Mississippi
Automobile Technology
Football 1, 2; Glee Club 1, 2; Who's Who 1, 2; Dixie
Drawl 1, 2.

CAROLYN COOPER HALL
Kokomo, Mississippi
Home Economics
B.S.U. 1, 2, Officer 2; Glee Club 1, 2; Wildcat Staff 1, 2;
Y.W.A. 1, 2, Officer 1.



TOMMY WELDON HALL
Purvis, Mississippi
Engineering
Band 1, 2; Orchestra 1, 2.

EARL LAVON HATHORN
Bassfield, Mississippi
Business Administration
F.B.L.A. 1, 2; Brotherhood 1, 2.

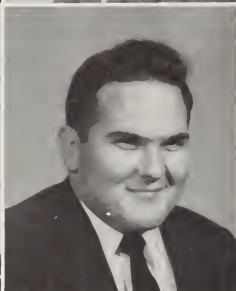


ALBERT RAY HAWTHORNE
McNeil, Mississippi
Agricultural Education
Agricultural Club 1, 2.



JOHN C. HEURTIN
Gretna, Louisiana
Business Administration
F.B.L.A. 2; Newman Club 2.

BARBARA SUE HOLDEN
Poplarville, Mississippi
B.A. Preparatory
Homecoming Court 2; Entre Nous 1, 2; Woman's Student
Government 2; Who's Who 2.



EVELYN HOLMES
Columbia, Mississippi
Business Education
F.B.L.A. 1, 2, Officer 2; B.S.U. 1, 2.

ROBERT GARLAND HUBBARD
Waveland, Mississippi
B.A. Preparatory
Band 2; Entre Nous 2; Orchestra 2; Glee Club 2; Newman
Club 2, Officer 2.



CHARLES ROBERT JACKSON
Purvis, Mississippi
Drafting

JIMMY ALLEN JARRELL
New Orleans, Louisiana
Engineering
Baseball 1, 2; Glee Club 1, 2; B.S.U. 1, 2; Cheerleader 1.



BILLY GYLAND JOHNSON
Columbia, Mississippi
Physical Education
Football 1, 2.

HAL JIM KENNY, III
Jennings, Missouri
Business Administration
Band 1, 2; Orchestra 1, 2; F.B.L.A. 1; Wesley Foundation 1, 2.



WANDA JEAN KING
Poplarville, Mississippi
Business Education
Y.W.A. 2; F.B.L.A. 1; B.S.U. 1, 2, Officer 2; Wildcat Staff 2;
N.E.A. 2, Officer 2; Glee Club 2; Ensemble 2.

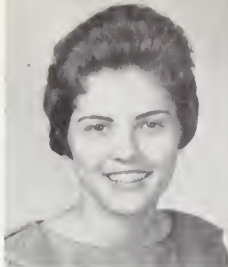
CARA JEANELLE LADNER
Picayune, Mississippi
Elementary Education
Y.W.A. 1, 2; B.S.U. 1, 2; Who's Who 2; Wildcat Staff 2.

CAROLYN SUE LADNER
Poplarville, Mississippi
Business Education

B.S.U. 1, 2, Officer 2; Class Officer 2; Who's Who 2; Phi Theta
Kappa 1, 2, Officer 2; Student Council 2; Wildcat Staff 1;
Business Club 1; Y.W.A. 1; Homecoming Court 2.

CLIFFORD L. LADNER
Perkinston, Mississippi
Agricultural Education

B.S.U. 1, 2; Agriculture Club 1, 2.

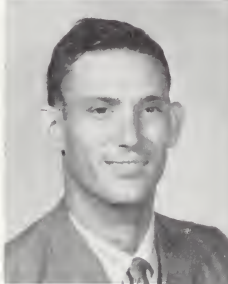


JOHN V. LADNER
Poplarville, Mississippi
Physical Education

Newman Club 1, 2, Officer 1, 2.

RUBY LOUISE LAFRANCE
Bay St. Louis, Mississippi
Elementary Education

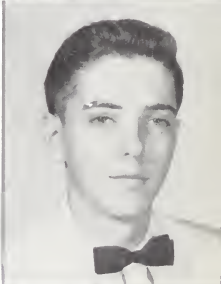
Newman Club 1, 2; Phi Theta Kappa 2; N.E.A. 2; Woman's
Student Government 1; Wildcat Staff 1, 2.



SYLVIA LEE
McNeill, Mississippi
Secondary Education

Student Council 1; Who's Who 1; Homecoming Court 1; Cheer-
leader 2; Biology Club 1; Glee Club 1; Wildcat Staff 2.

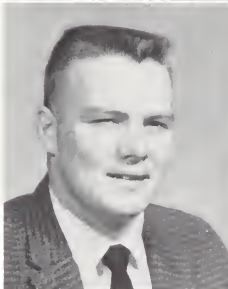
RICHARD CHARLES LENOIR
Purvis, Mississippi
Electronic Technology
Science Club 1.



VERNON LINDSEY
Mobile, Alabama
Physical Education
Football 1, 2.

TONY LOTT
Sandy Hook, Mississippi
Business Administration

Debate Team 1; F.B.L.A. 1, 2; Wildcat Staff 2.



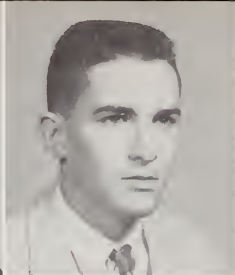
MARTHA JANE MAGEE
Mt. Olive, Mississippi
Physical Education

Y.W.A. 2; Phi Theta Kappa 2; Dixie Drawl Staff 1; Wildcat
Staff, Officer 2; Cheerleader 2; N.E.A. 2; Who's Who 2.

THOMAS J. MALONE
Hattiesburg, Mississippi
Chemical Engineering

Football 1, 2; Basketball 1, 2; Newman Club 1, 2; Phi Theta
Kappa 1, 2, Officer 2; Science Club 1, 2.





MARTHA ANN McBRIDE

Poplarville, Mississippi

Business Education

B.S.U. 1, 2, Officer 1; Y.W.A. 1, 2; Phi Theta Kappa 1, 2, Officer 2.

RICHARD DONALD McCRANEY

Lumberton, Mississippi

Pre-Engineering



ROBERT LUTHER McCULLOUGH

Columbia, Mississippi

Engineering

Band 1, 2; Orchestra 2; Brotherhood 1, 2.

MARVIN ALLEN McDONALD

Picayune, Mississippi

Chemistry

Phi Theta Kappa 1, 2; Entre Nous 2.



REBECCA ANN McKENZIE

Sandy Hook, Mississippi

Secondary Education

Glee Club 1; Biology Club 1; Y.W.A. 2; B.S.U. 1, 2.

ANDREW JULIUS MEIBAUM

New Orleans, Louisiana

Business Administration

F.B.L.A. 2.



FRED LOUIS MERCIER, JR.

New Orleans, Louisiana

Drafting

Newman Club 1, 2; Band 1, 2; Orchestra 1, 2.

SHELBY JACKSON MILLER

Poplarville, Mississippi

Drafting



VERLON WAYNE MILLER

Columbia, Mississippi

Business Administration

F.B.L.A. 1, 2; B.S.U. 1, 2.

WILLIE T. MILLER

Poplarville, Mississippi

Religious Education

PAT HARRISON MORRIS
Poplarville, Mississippi
Physical Education

XAVIER ELIAS MUCARZEL
San Bernardino, Venezuela
Engineering
Tennis Team 1, 2; Newman Club 1, 2.



LARRY JOE MYRICK
Poplarville, Mississippi
Mathematics
Phi Theta Kappa 2.

ALCIDE JOSEPH NECAISE
Pass Christian, Mississippi
Business Education
Newman Club 1, 2; F.B.L.A. 1, 2; Wildcat Staff 2.



BILLIE L. NELSON
Brooklyn, Mississippi
Drafting
Band 1, 2; Woman's Student Government 2; Dixie Drawl 1;
Glee Club 1.

JOE RONALD NEWTON
Hattiesburg, Mississippi
Auto Mechanics
Football 1, 2; Baseball 1, 2.



DARRIS PLAXTON O'QUINN
Columbia, Mississippi
Agriculture Education
Brotherhood 1, 2; Agricultural Club 1, 2; B.S.U. 2.

CHARLES D. OWENS
Hattiesburg, Mississippi
B.S. Preparatory
Wildcat Staff 1; Entre Nous 1, Officer 1.



SAMUEL DUNBAR PACE
Sumrall, Mississippi
Physical Education
Basketball 1, 2; Baseball 2; B.S.U. 1, 2.

JOHN W. RAINEY
Hattiesburg, Mississippi
Forestry
Football 1, 2; Phi Theta Kappa 1, 2; Dixie Drawl 1, 2; Wildcat
1, 2; Agricultural Club 1, 2, Officer 2; Class Officer 1, 2;
Student Council 1, 2; B.S.U. 1, 2.





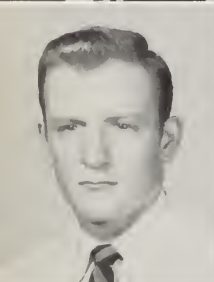
GAY MARNELL RHODES
 Bay St. Louis, Mississippi
Physical Education
 Band 1; Glee Club 2; Newman Club 2; Who's Who 1;
 Wildcat Staff 1.

JOHN C. RILES
 Sumrall, Mississippi
Pre-Engineering



PAUL GERALD ROBBINS
 Columbia, Mississippi
B.S. Preparatory

JOE ROBERT ROWELL
 Poplarville, Mississippi
Accounting
 F.B.L.A. 1.



DAVIS EARL SALTER
 Purvis, Mississippi
Secondary Education
 Band 1, 2.

JOHN W. SAUCIER
 Columbia, Mississippi
Engineering



BILLY FLOYD SEAL
 Picayune, Mississippi
Secondary Education

KATHLEEN SEAL
 Nicholson, Mississippi
Elementary Education
 Y.W.A. 1, 2; Wildcat Staff 2.



PERRY W. SEAL
 Poplarville, Mississippi
Engineering

SHELDON MARK SEUZENEAU
 Bay St. Louis, Mississippi
Engineering
 Newman Club 1, 2, Officer 1; Science Club 1.

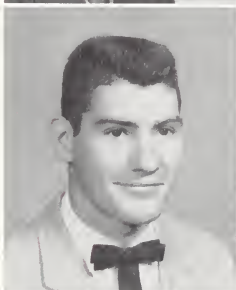
RAY SHAW
Perkinston, Mississippi
Agricultural Education



SAMUEL SHOROSH
Irbed, Jordan
Education

B.S.U. 1, 2; Brotherhood 1, Officer 1; Glee Club 1, 2, Officer 2;
Entre Nous 1, Officer 1.

JERRY J. SIMMONS
Purvis, Mississippi
Health



JOEL FRANCIS SMITH
Bogalusa, Louisiana
Physical Education

Football 1, 2; Baseball 1, 2; Boxing Team 1, 2.

JOSEPH T. SMITH
Bay St. Louis, Mississippi
Engineering



GLENDA SONES
Carriere, Mississippi
Elementary Education

Who's Who 1; Woman's Student Government 1; Wildcat Staff
2; Biology Club 1.

JAMES C. SONES
McNeill, Mississippi
Agricultural Education



BILLY LARKIN SPEARS
Columbia, Mississippi
Forestry

B.S.U. 1, 2; Brotherhood 1, 2; Baseball 1, 2; Basketball 1, 2;
Agricultural Club 1, 2, Officer 1.

ROBERT DOUGLAS STEWART
Perkinston, Mississippi
Agricultural Education



Football 1, 2; Basketball 1, 2; Baseball 1, 2; Agricultural Club
1, 2, Officer 1.

DANIEL L. STRAHAN
Hattiesburg, Mississippi
Forestry

Glee Club 2; Wildcat Staff 2.



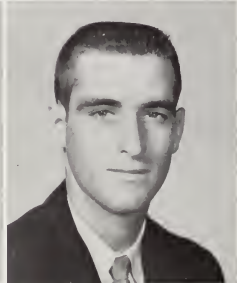
DEMARIS ANN STRINGER
Columbia, Mississippi
Medical Technology
B.S.U. 1, 2; Y.W.A. 2; Wildcat Staff 2.

PHILLIP DWAYNE STRINGER
Columbia, Mississippi
Art
Dixie Drawl 1, 2.



ANNELLE STUART
Poplarville, Mississippi
Elementary Education
B.S.U. 1, 2, Officer 1; Cheerleader 2; Homecoming Court 1;
Phi Theta Kappa 1, 2; Wildcat Staff 2; Y.W.A. 1, 2.

HENRY GORDON STUCKEY
Columbia, Mississippi
Mathematics



MARY MAUDE SUMMER
Kokomo, Mississippi
Home Economics
B.S.U. 1, 2; Women's Student Government 2; Glee Club 1, 2;
Wildcat Staff 2; Y.W.A. 1, 2, Officer 2.

THOMAS D. SWAN
Lumberton, Mississippi
Drafting



WALTER H. THOMPSON
Sumrall, Mississippi
Electronics

ALICE ANN THURMON
Purvis, Mississippi
Business Administration
F.B.L.A. 1, 2; Wesley Foundation 1, 2; Phi Theta Kappa 2;
Band 2; Glee Club 2; Wildcat Staff 2.



BILLY EARL TYNES
Poplarville, Mississippi
Electronics Technology

JAMES VINCENT VERDIGUEL
Tela, Honduras, C. A.
B.S. Preparatory
Newman Club 1, 2; Tennis Team 1, 2; Orchestra 1, 2.

DAVID RAY VOTAW
 North Braddock, Pennsylvania
Pre-Medicine
 Basketball 1, 2; Entre Nous 1, 2.

MARY ELIZABETH WATTS
 Columbia, Mississippi
Secondary Education
 Y.W.A. 1, 2, Officer 2; F.B.L.A. 1; B.S.U. 1, 2, Officer 2.



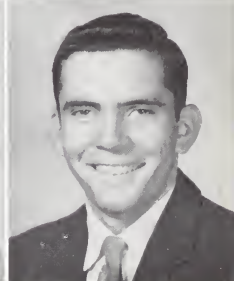
ROBERT WADE WEAVER
 Birmingham, Alabama
B.S. Preparatory
 B.S.U. 1, 2, Officer 2; Football 1, 2, Captain 2; Baseball 1.

ELWYN G. WHEAT
 Poplarville, Mississippi
Auto Mechanics



BYRON LEWIS WHITE
 Purvis, Mississippi
History
 Baseball 2.

JON CARROLL WILLIAMS
 Columbia, Mississippi
Mathematics
 Basketball 1, 2; Who's Who 2.



NOT PICTURED

*CARROLL WARREN BROOM
 WILLIAM HOWARD CHARLAN

*JAY HENRY EGAN
 JAMES T. HARRIS
 ADRIAN Z. JOHNSON

*MRS. PEGGIE RAE KOENENN
 MRS. PEBBLE LANG
 SIDNEY JOHN LYONS

*SECOND SEMESTER

*ROBERT HOWARD MARTIN
 RICHARD PETER MASSONY

*MARTHA ELAINE NECAISE
 *AARON RUSSELL
 WILLIAM E. SULLIVAN
 *DON W. SYMANK

*CHARLES L. TAYLOR
 HENRY L. THOMAS
 VANCE LEWIS WASCOM



FRESHMAN CLASS

"The first thing education teaches
you is to walk alone."

Trader Horn



SANDRA McLAURIN
Secretary-Treasurer



EUGENE GATWOOD
President



J. MIKE SIMMONS
Student Council
Representative



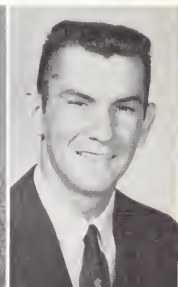
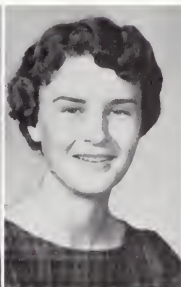
GERALD MIXON
Vice-President

JUDITH ANN ALBRITTON
Picayune, Mississippi

CHARLOTTE RUTH ALLEN
Columbia, Mississippi

CHARLES SAMUEL AMACKER
Poplarville, Mississippi

LARRY D. ANDREWS
Homer, Louisiana



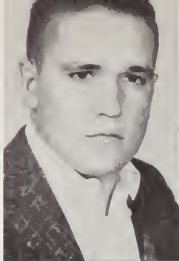
ROBBIENETTE ARINDER
Columbia, Mississippi

GERALD LEE AULTMAN
Sumrall, Mississippi

MARY CAROLYN AULTMAN
Columbia, Mississippi

PEGGY AVERY
Purvis, Mississippi



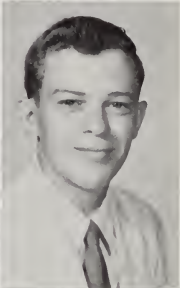


FRED EUGENE BAKER
Bogalusa, Louisiana

HARRY MADISON BARNETT
Poplarville, Mississippi

JO BETH BASS
Poplarville, Mississippi

JASPER F. BASYE
Columbia, Mississippi



FRANCES CAROL BEARD
Foxworth, Mississippi

SHERRY ANN BELL
Bassfield, Mississippi

VALDA RAE BERRY
Columbia, Mississippi

LONZO C. BILBO
Lumberton, Mississippi



HELEN M. BLACKWELL
Picayune, Mississippi

JAMES RAYMOND BOONE
Carriere, Mississippi

LINDA PAUL BOURNE
Prentiss, Mississippi

LARRY FRANK BRACEY
Kokomo, Mississippi



JAMES E. BREAKFIELD
Columbia, Mississippi

MARTHA GLADYS BROCK
Columbia, Mississippi

GARY LESTER BROOM
Sumrall, Mississippi

GEORGIA FAYE BUCKLEY
Oakvale, Mississippi



FELDA MAURICE BULLOCK
Columbia, Mississippi

MARTHA NELL BULLOCK
Columbia, Mississippi

LOWELL MICHAEL BURVANT
New Orleans, Louisiana

JACK ROSS BUSH
Hattiesburg, Mississippi

JUNE EVELYN CAMERON
Pass Christian, Mississippi



JAMES RAY CARNEY
Columbia, Mississippi



JIM LAMAR CARROLL
Bogalusa, Louisiana



TOM CARY CARVER
Poplarville, Mississippi



MARTHA ANN CATHA
Poplarville, Mississippi



RUTH KATHLEEN CLOUD
Lumberton, Mississippi



MEMORY LEE COLE
Picayune, Mississippi



MARY ELIZABETH COOK
Columbia, Mississippi



FRED L. COOPER
Columbia, Mississippi



GARY IRA COOPER
Poplarville, Mississippi



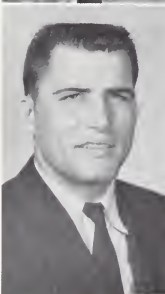
JANET KAYE CRAFT
Columbia, Mississippi



GLORIA V. DAUGHRILL
Lumberton, Mississippi



TERRY WILTON DAVIS
Picayune, Mississippi



THOMAS REDGIE DAVIS
Bassfield, Mississippi



BETTY SUE DEBROW
Lumberton, Mississippi



GERALD EDWARD DEEN
Sandy Hook, Mississippi



MORRIS WILMON DOWNES
Nicholson, Mississippi



PATRICIA EATON
Lumberton, Mississippi



JAMES H. EILAND
Hattiesburg, Mississippi



CAROLYN C. ENGLE
Purvis, Mississippi



LINDA JOY ENTREKIN
Columbia, Mississippi

KENDALL CHARLES EVANS
Purvis, Mississippi

NATHAN D. FARMER
Picayune, Mississippi

PAUL HOLLIS FARR
Prentiss, Mississippi



EDGAR FORTENBERRY
Columbia, Mississippi

GAIL FORTENBERRY
Foxworth, Mississippi

JOE ALLEN FORTENBERRY
Foxworth, Mississippi

JOSEPH OSCAR FORTENBERRY
Columbia, Mississippi



JERRY REGINALD FRIERSON
Picayune, Mississippi

EUGENE GEORGE GATWOOD
Hattiesburg, Mississippi

MARY EMMA GERALD
Hattiesburg, Mississippi

ROY M. GIACONE
Bogalusa, Louisiana

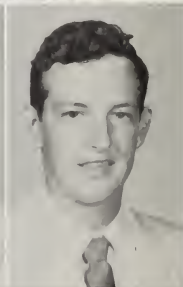


JAMES ROBERT GINN
Bay St. Louis, Mississippi

FLOYD NOAH GOAR
Sumrall, Mississippi

MERNICE DEAN GRINER
Columbia, Mississippi

LARRY NEDRA HAIK
Bogalusa, Louisiana



MICHAEL HERBERT HANEGAN
Purvis, Mississippi

DAVID HOWELL HANNAFORD
Columbia, Mississippi

HENRY BUTLER HARDY
Hattiesburg, Mississippi

WILLARD GENE HARRELL
Poplarville, Mississippi





SAMUEL O. HARRIS
McNeil, Mississippi

RUTH MAXINE HASSON
Sumrall, Mississippi

GEORGE T. HAYMAN
Prentiss, Mississippi

SELBY B. HERRINGTON
Lumberton, Mississippi

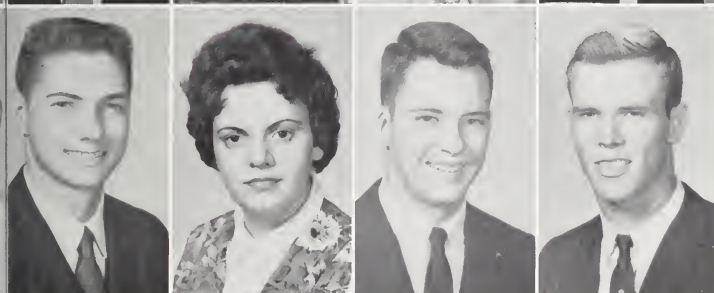


GRADY RAY HICKMAN
LeCompte, Louisiana

PATSY ELAINE HITT
Columbia, Mississippi

ALTON V. HOADLEY
Poplarville, Mississippi

FARRELL E. HOLDEN
Poplarville, Mississippi



JAMES BART HOLDEN
Poplarville, Mississippi

SYLVIA FRANCES HOLDEN
Poplarville, Mississippi

ALBERT ARCHIE HOPKINS
Picaune, Mississippi

SPENCER R. HUDSON
Athens, Tennessee



FREDRICK S. JERMYN
Columbia, Mississippi

MARCIA MARIE JONES
McComb, Mississippi

MARION ISABELLA JONES
Lumberton, Mississippi

WILLICE MARCELL JONES
Prentiss, Mississippi



PRENTISS CHARLES KAUFMAN
Columbia, Mississippi

NATHAN KENDRICK
Sumrall, Mississippi

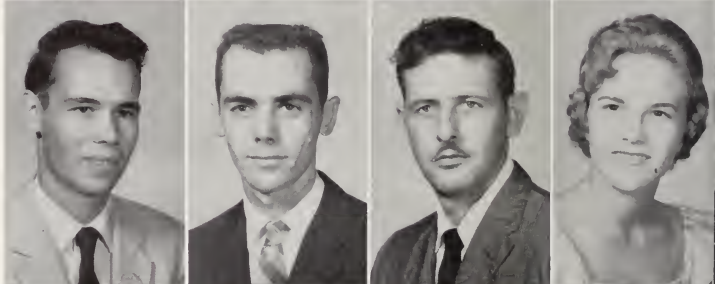
WILLIAM J. KENNEDY
Bay St. Louis, Mississippi

JANICE RUTH KERWIN
Prentiss, Mississippi

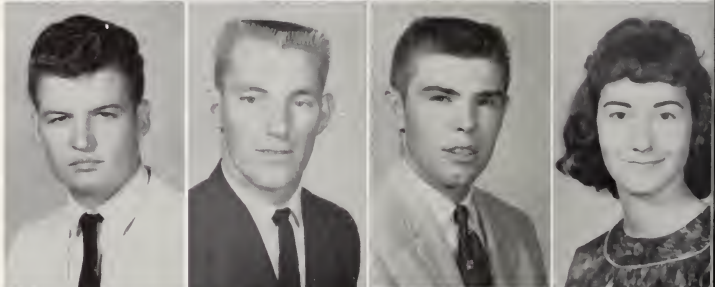
DICKEY KING
Bassfield, Mississippi
GWENDOLYN VIRGINIA KING
Poplarville, Mississippi
AUBREY AMES KITCHENS
Hattiesburg, Mississippi
MARY JACQUELINE KOENENN
Kin, Mississippi



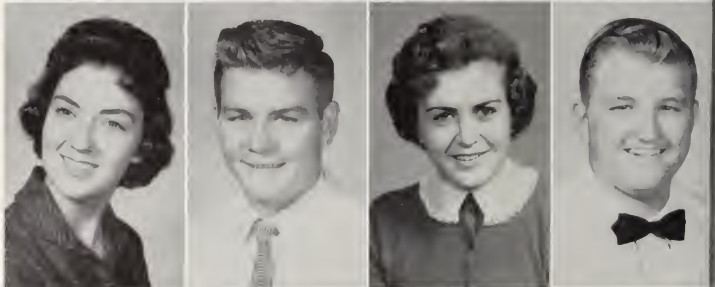
DALLAS AUTRY LADNER
Lumberton, Mississippi
J. T. LADNER
Pass Christian, Mississippi
JAMES JOSEPH LAPOINT
Bay St. Louis, Mississippi
DIANNE LEE
Purvis, Mississippi



HENRY GERALD LEE
Foxworth, Mississippi
WILLIAM DANIEL LEE
Purvis, Mississippi
DANIEL WEBSTER LEWIS
Lumberton, Mississippi
PATSY JEAN LINDSEY
Bassfield, Mississippi



ELSIE JO LIZANA
Carriere, Mississippi
LOUIE ROY LOFTON
Hattiesburg, Mississippi
VENIA MAE LOWE
Poplarville, Mississippi
ELTON LARRY LUMPKIN
McNeill, Mississippi



JAMES HAROLD McBRIDE
Sumrall, Mississippi
GWEN FAYE McCARDLE
Poplarville, Mississippi
RUTH HELEN McIVER
Poplarville, Mississippi
SANDRA LEE McLAURIN
Poplarville, Mississippi





RICHARD THOMAS McMAHON
Purvis, Mississippi

JIMMY CLAYTON McMURRY
Foxworth, Mississippi

NORMA DEEN MAGEE
Carson, Mississippi

RUBY FRANKIE MAGEE
Columbia, Mississippi

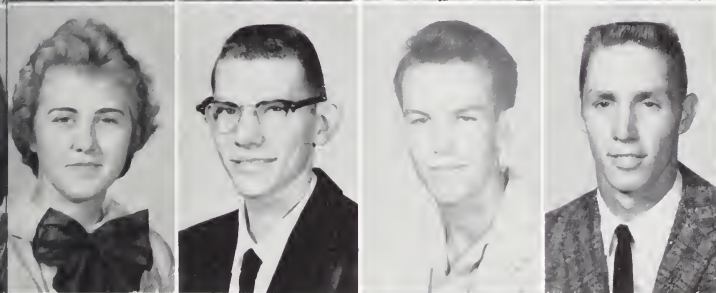


WILLIS CLEM MAPLES
Hattiesburg, Mississippi

RICHARD W. MARKERT
Slidell, Louisiana

BETTYE ANN MARKETTE
Gulfport, Mississippi

INEZ BONNEY MARKETTE
Gulfport, Mississippi

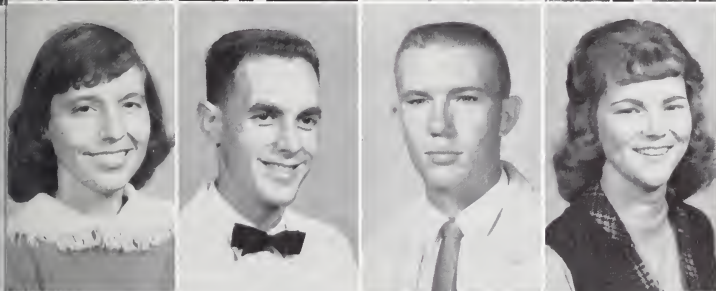


IRIS EDWINA MARTIN
Carriere, Mississippi

JAMES W. McGEHEE
Picaune, Mississippi

FRED CAROL MESSER
Sumrall, Mississippi

GERALD WAYNE MIXON
Hattiesburg, Mississippi



CLEOPATRA MARY MORAN
Kiln, Mississippi

GERALD ELDON MORAN
Pass Christian, Mississippi

LARRY L. MOREE
Sumrall, Mississippi

NORMA LUVIA MORAN
Kiln, Mississippi



PEGGY NELL MORGAN
Morgantown, Mississippi

ANN ROUSE MORRIS
Poplarville, Mississippi

HERBERT ALLEN MORRIS
Poplarville, Mississippi

ELBY ALBERT ODOM
Poplarville, Mississippi

FRED L. OGLESBEE
Columbia, Mississippi



PATRICIA ANNE OWEN
Lumberton, Mississippi



BONNIE LOU PAGE
Poplarville, Mississippi



ELIZABETH GAYLE PARKER
Bay St. Louis, Mississippi



YVONNE PATTERSON
Columbia, Mississippi



ROSE MARIE PENTON
Carriere, Mississippi



REBECCA ANN PHILLIPS
Poplarville, Mississippi



LINDA ANN PIERCE
Columbia, Mississippi



FRANK K. PINKERTON
Mobile, Alabama



ROBERT EARL PITTMAN
Foxworth, Mississippi



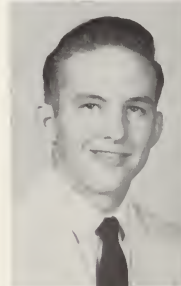
JOEL WAYNE POLK
Bassfield, Mississippi



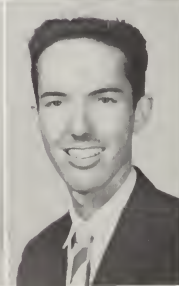
LINDA ANN POWELL
Columbia, Mississippi



JAMES WENDELL PRICE
Foxworth, Mississippi



JAMES ELLIS PRITCHETT
New Orleans, Louisiana



BETTY ROSE PYLANT
Purvis, Mississippi



WILLIAM PERRY RAMSER
Bogalusa, Louisiana



SELVYN RAYBORN
Lumberton, Mississippi



DARRYL COOPER RESTER
Poplarville, Mississippi



WYNONA RESTER
Poplarville, Mississippi



JOYCE REYER
Lumberton, Mississippi





KENT L. ROBBINS
Picayune, Mississippi

STEPHEN AUSTIN ROCHE
Carriere, Mississippi

JEWEL RAY RUSHING
Tylertown, Mississippi

MARCY LYNN RUSHING
Poplarville, Mississippi

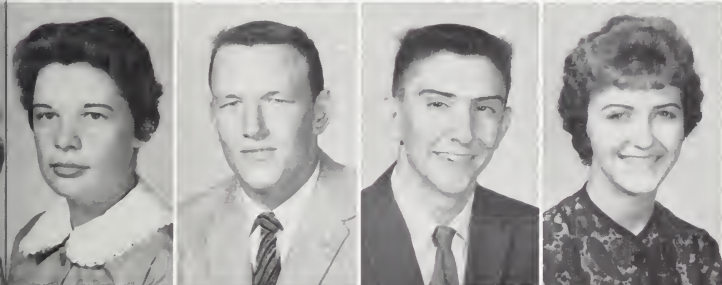


JAMES C. RYALS
Columbia, Mississippi

VINCENT J. SANTALUCITO
New Orleans, Louisiana

WAYNE M. SAUCIER
Purvis, Mississippi

JEANETTE SEAL
Picayune, Mississippi

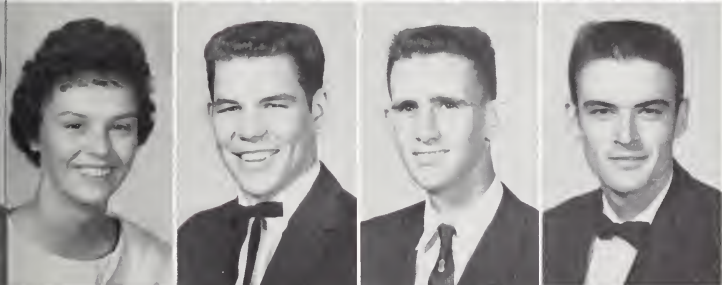


JUDITH ARLENE SEALS
Poplarville, Mississippi

DANIEL FORREST SIMMONS
Purvis, Mississippi

JOHN MIKE SIMMONS
Bogalusa, Louisiana

SADIE ROSE SIMMONS
Columbia, Mississippi

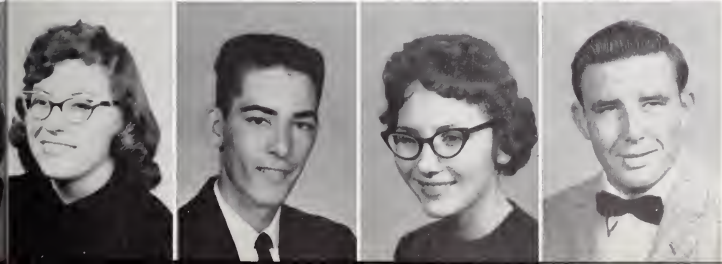


WINNIE FAYE SINGLEY
Columbia, Mississippi

GABERIAL SKIPPER
Picayune, Mississippi

EMMETT BURNELL SMITH
Prentiss, Mississippi

LARRY SMITH
Poplarville, Mississippi



PATSY RUTH SMITH
Poplarville, Mississippi

ROBERT WAYNE SMITH
Poplarville, Mississippi

MARGARET SMITH
Columbia, Mississippi

THOMAS EDWARD SMITH
Picayune, Mississippi

WILLIAM GERALD SMITH
Hattiesburg, Mississippi

MARTHA ANNE JONES
McNeil, Mississippi

NORMAN JAMES SONIER
Waveland, Mississippi

JAMES N. SPIERS
Carriere, Mississippi



JUDITH ELAINE STEWART
Poplarville, Mississippi

ROBERT EARL STEWART
Poplarville, Mississippi

MARGARET PATRICIA STUART
Poplarville, Mississippi

GEORGE RONNIE TAGERT
Columbia, Mississippi



PATRICIA ANN TANKSLEY
Hattiesburg, Mississippi

ENGLE L. TAYLOR
Purvis, Mississippi

JAMES EDWARD TERRY
Columbia, Mississippi

ANTHONY N. TESSITORE
New Orleans, Louisiana



MARCHIE PERNEL THOMAS
Poplarville, Mississippi

HAROLD C. THOMPSON
Bassfield, Mississippi

PATSY NELL THORNHILL
Foxworth, Mississippi

SHERMAN LOUIS TOWNSEND
Lumberton, Mississippi



RICHARD W. TRAYLOR
Hattiesburg, Mississippi

GAYLE REBECCA TULLOS
Columbia, Mississippi

SYLVIA ANN TULLOS
Columbia, Mississippi

SEDGIE RALPH TYNER
Poplarville, Mississippi



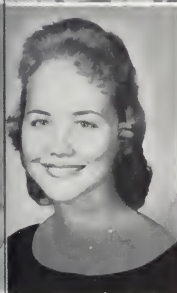


MILDRED MARIE USHER
Clermont Harbor, Mississippi

WILLIAM LOUIS VERNON
Slidell, Louisiana

ROBERT S. WALKER
Picayune, Mississippi

CHARLOTTE ANN WATTS
Columbia, Mississippi



JOAN LEA WATTS
Poplarville, Mississippi

EUGENE L. WELLS
Picayune, Mississippi

J. W. WHEAT
Picayune, Mississippi

GRADY JACK WHITE
Poplarville, Mississippi



LESLIE L. WHITFIELD
Poplarville, Mississippi

THOMAS R. WILLETT
Lake Charles, Louisiana

ROBERT EARL WILLIAMS
Columbia, Mississippi

WAYNE WILLOUGHBY
Poplarville, Mississippi



ARNITA NADINE WILSON
Hattiesburg, Mississippi

JERREL DOUGLAS WILSON
Mobile, Alabama

LARRY TOXIE WISE
Carriere, Mississippi

HORACE LAVELL YATES
Moss Point, Mississippi



MARTHA OFELIA ZAPATA
Puerto Armuelle, Panama

FRESHMEN NOT PICTURED

ALEXANDER, GEORGE A.
BLAIZE, EDMOND A.
BLANCHARD, ALLEN NICHOLAS
BOND, MICKEY
*CASSE, LOUIS VICTOR
*CRAIN, WARREN BROCK
CUEVAS, MARTHA ELIZABETH
*DARRAH, ROBERT EMMETT
*DEARMON, HAROLD DOUGLAS
DUCKWORTH, RAYFORD CARL
FORTIER, EUGENE JOSEPH
FOWLER, HERSCHEL W.
GINN, CHARLES E.
GIPSON, ELVIN RAY
*GRUP, EUGENE
HALE, JAMES A. (MRS.)
HARRIS, RALPH DEWAINÉ
*HARTFIELD, JUANITA HATTIE
HARTZOG, SEYMON S.
HOLLOWAY, LANSEL GLEN
HUBBARD, RODNEY G.
KIMBALL, LARRY
KING, DONALD LOUIS
LEE, HALLIE BOND
*McRANEY, ELIZABETH ANN

*SECOND SEMESTER

MARINO, ROBERT CHARLES
MILLER, BILLY WAYNE
*MILLER, JAY BENTON
*MITCHELL, ALICE FAY
*MITCHELL, GEORGE F.
MITCHELL, GREGORY HAROLD
NEWTON, JOHN D.
POWELL, THOMAS WARNER
REYNAUD, RAYMOND PRESTON
RHODEN, ALICE LAMINDA (MRS.)
*RICHARDSON, FRED BYRON
*RICHARDSON, RICHARD
*RODGERS, WILLIAM DANIEL
SCAFIDI, AUGUST J.
SCOTT, ROBERT EARL
SHARP, SIDNEY GLENN
SMITH, EDWARD E.
SMITH, HUGH WILLIAM
TARTAVOULLE, CHARLES
TAYLOR, BURT DELANO
*VOWELL, LARRY WILLIAM
WHEAT, ARCHIE
WHITE, CHARLENE (MRS.)
WHITFIELD, EARL
WILLIAMSON, JOHN ALLEN
*WRIGHT, KENNETH ROBERT



COSMETOLOGY

SHIRLEY BRUMFIELD
Poplarville, Mississippi

NONA FAYE BRYANT
Hattiesburg, Mississippi

MARY ELIZABETH CARLAN
Lumberton, Mississippi

JANICE GARRIGA
Pascagoula, Mississippi



CHRISTINE HUMPHREY
Poplarville, Mississippi

ANN LANGSTON
Oakvale, Mississippi

HILDA LEE
Carriere, Mississippi

ELTA MAE OGLESBEE
Columbia, Mississippi

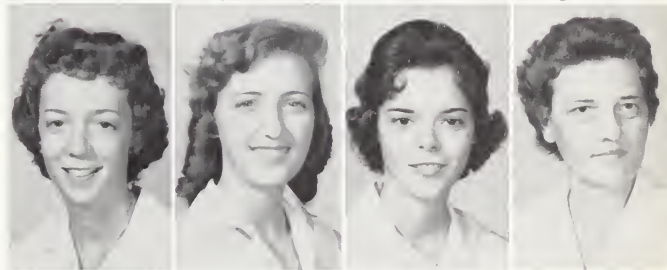


JANICE RESTER
Picayune, Mississippi

PEGGY EARLE SHIVERS
Oakvale, Mississippi

IVA NELL SLAVEN
Picayune, Mississippi

BESSIE LEE SMITH
Picayune, Mississippi



LOU JEAN SMITH
Wiggins, Mississippi

VESTAL STOCKSTILL
Picayune, Mississippi

IRIS LYNN SWAN
Lumberton, Mississippi



Not Pictured:

GLORIA R. HARMON
Picayune, Mississippi

MARY KATHERINE HARRIS
Picayune, Mississippi

VALORIE FRANCIS HERRIN
Picayune, Mississippi

Cosmetology is offered at Pearl River Junior College as a terminal course of nine months. It has the approval of the State Board of Education and the Mississippi Board of Cosmetology.

TERMINAL TECHNOLOGY



COSMETOLOGY

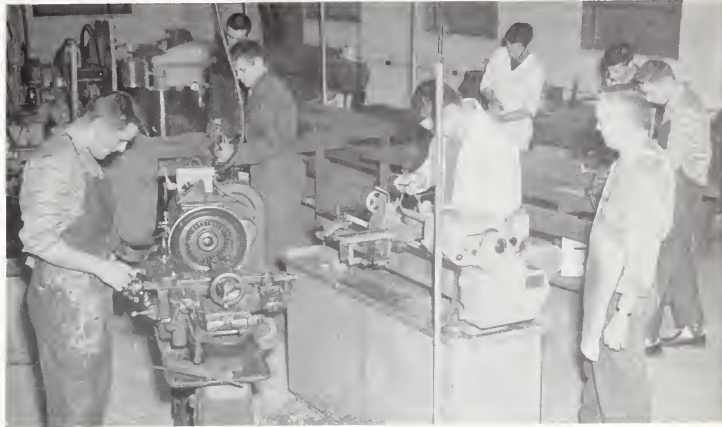
DRAFTING



ART

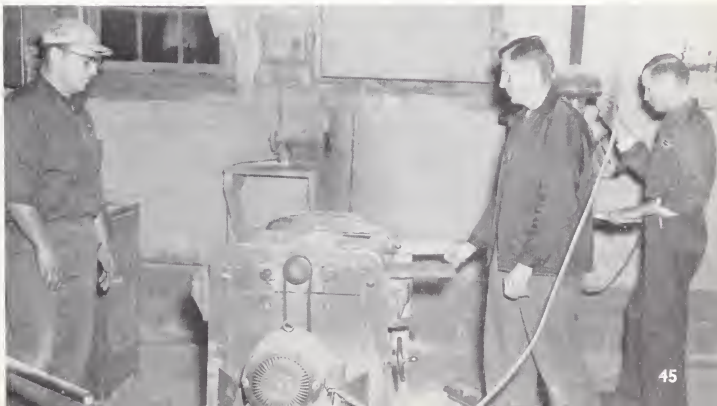
AND VOCATIONAL COURSES

METAL PROCESSES



AUTO MECHANICS

CABINET MAKING





HIGH SCHOOL AG



JACOBS HALL

Y-TEENS



PRINCIPAL'S MESSAGE



The school year of 1959-60 has given each of us, teachers and students, the opportunity to grow scholastically, socially, physically, and spiritually. We have enjoyed the privilege of helping you to grow.

We hope the treats and problems you faced in school this year will become happy memories in years ahead.

Marvin R. White

SENIOR CLASS

*"A little pain, a little pleasure,
A little heaping up of treasure;*

*Then no more gazing upon the sun;
All things must end that have begun."*
John Payne



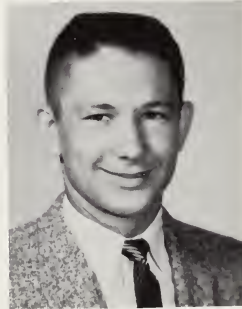
ROBERT F. COCHRAN
Secretary-Treasurer



ANTHONEY E. DAVIS
President



BILL RAYMOND WILLIAMS
Student Council
Representative



ROBERT E. YOUNG
Vice-President

DOLLY RUTH AMACKER

Poplarville, Mississippi
Y.W.A. 3, 4, Officer 3, 4; Glee Club 2; 4-H Club 1.

LEROY RUBEN BILBO

Lumberton, Mississippi
F.F.A. 2, 3, 4; 4-H Club 1, 2.



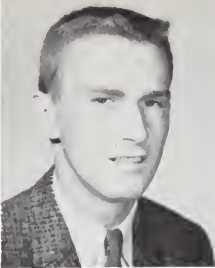
PATSY JOANN BURGE

Poplarville, Mississippi
Y-Teens 2, 4; Band 1, 2, 4; Library Club 3; Who's Who 4;
Class Officer 1, 2; Commercial Club 3, Officer 3.

GEORGE CARTER

Poplarville, Mississippi
Band 1, 2, 3, 4; F.F.A. 2; 4-H Club 1, 2.





ROBERT FISHEL COCHRAN, JR.

Poplarville, Mississippi
Class Officer 1, 2, 3, 4; Football 1, 2, 3, 4; "P" Club 2, 3, 4;
Glee Club 1, 2; 4-H Club 1, 2; F.F.A. 2, 3; Baseball 1, 2, 3, 4;
Who's Who 1, 2; All Desota Conference 4; Honorable Mention 3.

JOHN D. CRANE

Lumberton, Mississippi
F.F.A. 2, 3; 4-H Club 2; Glee Club 2.



ANTHONEY EARL DAVIS

Poplarville, Mississippi
Class Officer 1, 2, 3, 4; B.S.U. 1; F.F.A. 1, 2; Football 1, 2, 3,
4; Baseball 1, 2, 3, 4; Student Council 3, 4; Who's Who 3, 4;
"P" Club 2, 3, 4.

BOBBY EARL DAVIS

Poplarville, Mississippi
Band 1, 2, 3, 4; F.F.A. 2, 3; 4-H Club 1, 2; Orchestra 4.



DOROTHY MAE DAVIS

Poplarville, Mississippi
Y.W.A. 2, 3, 4, Officer 3, 4; Y-Teens 3, 4; Glee Club 1, 3;
4-H Club 1, 2.

BONI CATHERINE DAY

Poplarville, Mississippi
F.H.A. 1, 2, Officer 1, 2; Newman Club 3, 4; Wildcat Staff
4; Y.W.A. 3, 4; Class Officer 1, 2; Homecoming Court 1, 2;
Glee Club 3, 4; Ensemble 4; Pep Squad 1, 2, 3; Cheerleader
4; Band 1, 2, 3, 4; Y-Teens 1, 2, 3, 4.



DARWYNN LEVELL FLYNN

Poplarville, Mississippi
F.F.A. 2, 3, 4.

ROBERT CURTIS HOWARD

Poplarville, Mississippi
F.F.A. 2, 3, 4, Officer 4; Basketball 4.



LARRY TAYLOR HUNT

Ganado, Texas
Science Club 3; Football 2, 4; Student Council 2; Track 2, 3;
Class Officer 2; F.H.A. Beau 3.

CHARLES ROBERT JARRELL

Poplarville, Mississippi
4-H Club 1, 2, Officer 1; F.F.A. 2; Baseball 2, 3, 4.

ORA SUE KENNEDY WALLACE

Carriere, Mississippi
Y-Teens 4; Glee Club 3, 4.

ELIZABETH LEE

Poplarville, Mississippi
Basketball 1, 2, 3, 4; 4-H Club 1, 2, 3, 4, Officer 1, 2; Music
4; Glee Club 2.



LOUISE McPHAIL

Poplarville, Mississippi
Y-Teens 1, 2, 3, 4; Y.W.A. 1, 2, 3, 4, Officer 1, 2, 3, 4; Glee
Club 1, 2; Rainbow 1, 2, 3, 4; 4-H Club 1 2.

JANE ELLEN McWILLIAMS

Poplarville, Mississippi
Y-Teens 1, 2, 3, 4, Officer 2, 3, 4; Glee Club 3, 4; Y.W.A. 3, 4;
B.S.U. 3, 4; Ensemble 3, 4; Pep Club 1, 2, 3; Who's Who 2;
Student Council 2.



JAMES DONALD MILNER

Poplarville, Mississippi
F.F.A. 2, 3, 4; Football 1, 2, 3, 4; 4-H Club 1, 2; "P" Club 2, 3, 4.

CARLA NELL MITCHELL

Poplarville, Mississippi
Y-Teens 1, 2, 3, 4, Officer 2, 3, 4; Glee Club 1, 2, 3, 4; Who's
Who 2, 4; Class Officer 1; Student Council 2; Ensemble 3, 4;
Band 3, 4; Officer Pep Squad 1, 2, 3; Y.W.A. 3, 4, Officer 4;
B.S.U. 3, 4.



VIOLET ELIZABETH MITCHELL

Poplarville, Mississippi
4-H Club 1, 2, 3; Glee Club 1, 2.

JUANITA JO MOODY

Poplarville, Mississippi
Y-Teens 1, 2, 3, 4; Glee Club 1, 2, 3; 4-H Club 1, 2, Officer 1;
Y.W.A. 1, 2, 3, 4, Officer 1, 2, 3, 4.



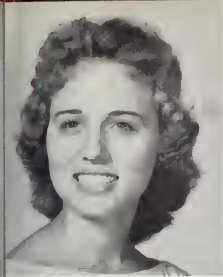
EDWARD WALLEY MORRISON

Poplarville, Mississippi
F.F.A. 2.

HILDA KAYE NELSON

Poplarville, Mississippi
Y-Teens 1, 2, 3, 4, Officer 2, 4; Glee Club 1, 2, 3, 4, Officer 4;
Pep Club 1, 2, 3, Officer 2, 3; Y.W.A. 3, 4.





SYBIL ARLENE PITTMAN

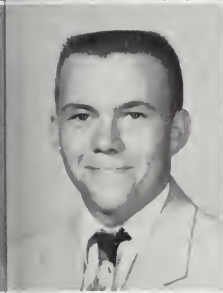
Poplarville, Mississippi

Y-Teens 1, 2, 3, 4, Officer 1, 2, 4; Glee Club 1, 2, 3, 4; Ensemble 3, 4; Band 1, 3; Pep Squad 3; Y.W.A. 3, 4, Officer 4; Wildcat Staff 4; B.S.U. 3, 4; Class Officer 1.

IRWIN WINDHAM RILEY, JR.

Poplarville, Mississippi

Baseball 2, 3; Football 2, 3; 4-H Club 1, 2, 3, 4; F.F.A. 2, 3, 4.



JEPHTHA EMORY SMITH

Poplarville, Mississippi

F.F.A. 2, 3, 4.

JIMMY LAMINT SMITH

Poplarville, Mississippi

F.F.A. 2, 3, 4; 4-H Club 1, 2; Glee Club 1; Football 1.



MAC A. SMITH

Poplarville, Mississippi

Basketball 1, 2, 3, 4; Baseball 2, 3, 4; Who's Who 3, 4; Class Officer 1.

MARL WAYNE SMITH

Poplarville, Mississippi

Band 1, 2, 3, 4, Officer 4; 4-H Club 1, 2; F.F.A. 2.



LOUIS CLEMON STINES

Poplarville, Mississippi

Football 3, 4; F.F.A. 2, 3, 4; "P" Club 3, 4.

KENDALL LEE STOCKSTILL

Carriere, Mississippi

F.F.A. 2, 3, 4.



LAURA JANE STRINGFELLOW

Poplarville, Mississippi

Y-Teens 1, 2, 3, 4; Glee Club 1, 2, 3, 4; 4-H Club 1, 2, 3, 4; Y.W.A. 3, 4; Pep Squad 1, 2; Wildcat Staff 4.

NEDDIE C. TUCKER

Poplarville, Mississippi

Football 3, 4; Basketball 4; Band 1; F.F.A. 2; 4-H Club 1, 2; Glee Club 1, 2.

SANDRA HELEN WATTS

Poplarville, Mississippi

Y-Teens 1, 2, 3, 4, Officer 1; 4-H Club 1, 2, 3, 4, Officer 1, 2; Who's Who 1, 2; Homecoming Court 1; Glee Club 1, 2, 3, 4; Cheerleader 3, 4; Pep Squad 1, 2; Y.W.A. 3, 4; Wildcat Staff 4; Forestry Queen 4; Drill Team Queen 4.

VIRGINIA LEE WHITE

Poplarville, Mississippi

Y-Teens 1, 2, 3, 4, Officer 1, 2, 3, 4; Glee Club 1, 3, 4; Band 3; Cheerleader 2, 3, 4; Y.W.A. 3, 4; Ensemble 3; Who's Who 2.



WINSTON GUILDFORD WHITFIELD

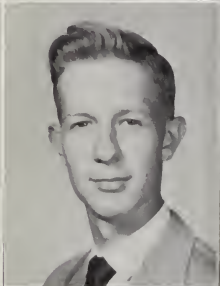
Poplarville, Mississippi

F.F.A. 2, 3.

BILL RAYMOND WILLIAMS

Poplarville, Mississippi

Student Council 3, 4; Band 1, 2, 3, 4; F.F.A. 2.



LARRIMORE SMITH WILLIAMS

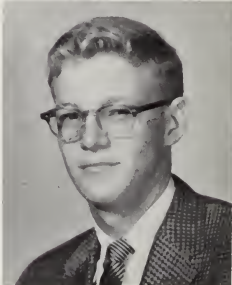
Poplarville, Mississippi

Football 2, 3, 4; Basketball 4; Baseball 2, 4; Tennis 1, 2.

MARGARET ANN WILLIAMSON

Poplarville, Mississippi

Y.W.A. 1, 2, 4, Officer 1, 2; Glee Club 1, 2, 4; Band 4; Pep Squad 1, 2; B.S.U. 1, 2.



ROBERT ELIZAH YOUNG

Poplarville, Mississippi

Football 1, 2, 3, 4; Baseball 1, 2, 3, 4; Basketball 1, 2, 3, 4; Class Officer 1, 2, 3, 4; "P" Club 1, 2, 3, 4; Who's Who 1, 2, 3, 4.



NOT PICTURED

CLYDE EDDIE SLATTEN

Picayune, Mississippi

JOHN ALLEN WILLIAMS

Purvis, Mississippi

JUNIOR CLASS

"Direct your effort more to preparing youth for the path, and less to preparing the path for the youth."
Judge Ben Lindsey



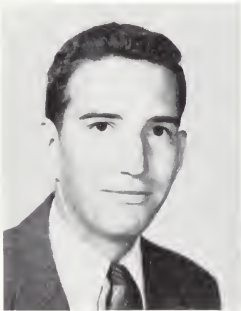
JUDY RAWLS
Secretary-Treasurer



JUDY K. McLAURIN
President



GARTH G. GILPIN
Student Council
Representative



DWIGHT RONALD DAVIS
Vice-President

EDNA MARIE AMACKER
Poplarville, Mississippi



LINDA GAIL AMACKER
Poplarville, Mississippi



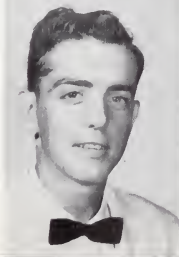
MARILYN DAVIS AMACKER
Poplarville, Mississippi



ROBERT LIONELL AMACKER
Poplarville, Mississippi



J. M. BARBER
Carriere, Mississippi



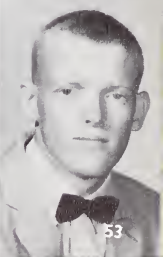
JAMES WILLIAM BARNES
Poplarville, Mississippi



SARA BETH BROADUS
Poplarville, Mississippi



CHARLIE RAY (JACK) BROCK
Poplarville, Mississippi



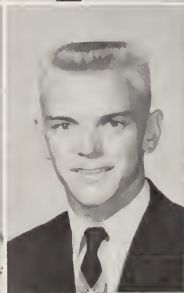


BILLY COLEMAN
Poplarville, Mississippi

MAVIS FAYE COOPER
Poplarville, Mississippi

JAMES EARL COWART
Poplarville, Mississippi

DWIGHT RONALD DAVIS
Poplarville, Mississippi



GERALD LEROY DAVIS
Poplarville, Mississippi

JANE EATON
Lumberton, Mississippi

JAMES ADDISON FORTE
Poplarville, Mississippi

ADA EVANGELINE FLYNN
Poplarville, Mississippi



GARTH GRIFFITH GILPIN
Poplarville, Mississippi

BILLY FRANCES GREER
Poplarville, Mississippi

MARY KATHLEEN HARRIS
Carriere, Mississippi

CHARLOTTE ANN HARVEY
Poplarville, Mississippi



CAROL ANN HOLDEN
Poplarville, Mississippi

GERALDINE HOLDEN
Poplarville, Mississippi

THETA FAYE HOLSTON
Poplarville, Mississippi

MARYLAND VIRGINIA HUMPHREY
Poplarville, Mississippi



JOYCE FAYE JONES
Poplarville, Mississippi

LILLIAN LOUISE JONES
Poplarville, Mississippi

JAMES ALVIN KELLAR
Poplarville, Mississippi

MICHAEL KILBY
Poplarville, Mississippi

PATSY RAY LAMBERT
Poplarville, Mississippi

GEORGE ELIAS LEGGETT

Poplarville, Mississippi

BILLY ZENE LITTLETON

Poplarville, Mississippi

JUDITH McLAURIN

Poplarville, Mississippi



BRUCE ADAIR MILLER
Poplarville, Mississippi

DELLA LOUISE MOORE

Poplarville, Mississippi

BONNIE NORFLEET MORRIS

Poplarville, Mississippi

ALFRED (BUTCH) NORRIS

Poplarville, Mississippi



DAISY MYRNA ODOM
Poplarville, Mississippi

CATHERINE WILLENA PERRY

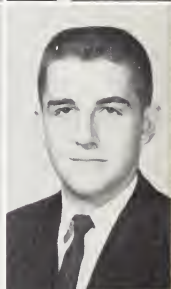
Poplarville, Mississippi

RAYMOND PERRY

Carriere, Mississippi

FRED WEBSTER PERTUIT

Poplarville, Mississippi



MICHAEL ROGER POOLE
Poplarville, Mississippi

BETTY PRICE

Poplarville, Mississippi

NELL YVONNE PULLEN

Poplarville, Mississippi

BILLIE HIRAM RAWLS

Poplarville, Mississippi



JUDY KAYE RAWLS
Poplarville, Mississippi

BURLON WESLEY REID

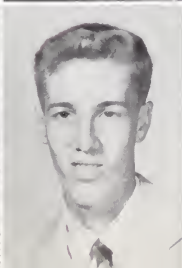
Poplarville, Mississippi

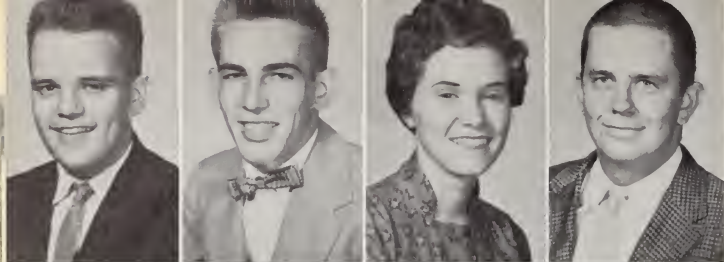
HIRAM SOLLIE RESTER

Poplarville, Mississippi

PAUL VIRGIL SANDERSON

Poplarville, Mississippi





DONALD LLOYD SMITH
Poplarville, Mississippi

HIRIAM COWART SMITH
Poplarville, Mississippi

BRENDA PATRICIA STEWART
Poplarville, Mississippi

MICHAEL FULMON STEWART
Poplarville, Mississippi

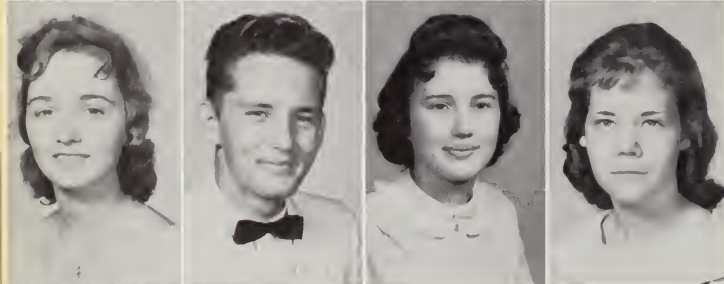


PATRICIA ELLEN STEWART
Poplarville, Mississippi

JANIE CHARLOTTE STUART
Poplarville, Mississippi

FAITH THOMAS
Poplarville, Mississippi

EUGENE WHEAT
Poplarville, Mississippi



GLORIA JEAN WHEAT
Poplarville, Mississippi

ROY RILEY WHIDDON
Poplarville, Mississippi

ADDEAN WHITE
Poplarville, Mississippi

CHRISTINE WHITFIELD
Poplarville, Mississippi



PRISCILLA WHITMAN
Poplarville, Mississippi

JAMES WISHART
Poplarville, Mississippi

NOT PICTURED

*BARBARA BATES
JACQUELYN ANN GINN
*ELMER GIPSON

*JOE MOODY
*BILLY RUFUS STRAHAN
DE ANNA SUMRALL

*SECOND SEMESTER

P.R.C. WHO'S WHO



MR. AND MISS P.R.C.

ELMER COOK

BARBARA HOLDEN

**BEST
PERSONALITY**

GEORGE DALE
MARTHA MAGEE



**MOST
HANDSOME**

JON WILLIAMS



**MOST
BEAUTIFUL**

JOAN WATTS

**BEST
ATHLETE**

BOBBY WEAVER





WITTIEST

"CHIEF" GERALD
JEANELLE LADNER

MOST LIKELY TO SUCCEED

THOMAS MALONE
CHARLOTTE ALLEN



BEST ALL-ROUND

GEORGE DALE
MARTHA JANE MAGEE



BEAUTIES AND BEAUX



PERRY BAGGETT
BARBARA HOLDEN

CAROLYN LADNER
TOMMY EZELL



JOAN WATTS
JON WILLIAMS

P.H.S. WHO'S WHO



MR. AND MISS P.H.S.

CARLA NELL MITCHELL

TONY DAVIS



**BEST
PERSONALITY**

TONY DAVIS
JOANN BURGE

**MOST
HANDSOME**

MAC SMITH



**MOST
BEAUTIFUL**

NELL PULLEN



**MOST LIKELY
TO SUCCEED**

JUDY RAWLS
GEORGE LEGGETT



**BEST
ALL-ROUND**

TONY DAVIS
CARLA NELL MITCHELL

**BEST
ATHLETES**

ROBERT YOUNG
JUDY McLAURIN



WITTIEST

LOUISE McPHAIL
DON SMITH

BEAUTIES AND BEAUX



TONY DAVIS
PATSY STEWART

MAC SMITH
CARLA NELL MITCHELL



NELL PULLEN
ROBERT YOUNG



NEWMAN CLUB



SEATED, left to right: Kay Cabell, Sheldon Seuzeneau. STANDING, FIRST ROW: Charlotte Cook, Martha Zapata, Jacqueline Koennan, Janice Garriga, Boni Day, Javier Mucarzel. SECOND ROW: Vicent Santalucito, Anthony Tessitore, Lowell Burvant, June Cameron, Bill Vernon, James Verdiguell, Edmond Blaïze, Lloyd Cuevas. THIRD ROW: Raymond Reynaud, A. J. Necaïse, Bill Kennedy, Fred Merceir, J. V. Ladner, Woody Markert, Jerry Garriga. NOT PICTURED: Bob Hubbard, Gay Rhodes, John Hurtin, Mr. Ello, C. Taitavolle, B. Taylor.

WESLEY FOUNDATION



STANDING, left to right: Dan Strahan, Don Allgood, Reggie Davis, Rev. I. H. Sells, Norma Deen Magee, Jane Fortenberry, Bonnie Markette. SEATED, left to right: Charlotte Cook, Mary Emma Gerald, Millie Usher, Janice Bankston, Martha Brock, Bettye Markette.

BROTHERHOOD



SEATED, left to right: Raymond Bullock, Perry Baggett, Henry Conerly, Gerald Aultman. STANDING, left to right: David Hannaford, Harold McBride, Lynwood Oglesbee, Gary Broome, Emmitt Smith, Spenser Hudson, Seymon Hartzog, Larry Moree, Floyd Goar, Gordon Stuckey, Dallas Ladner, Michael Hanegan.

B.S.U. COUNCIL



SEATED, left to right: Wanda King, Carolyn Ladner, Beth Watts. STANDING, left to right: Martha Jane Magee, Carolyn Hall, George Dale, Henry Conerly, Sybil Bucklev, Peggy Dyar.

DIXIE DRAWL



SEATED, left to right: Norma Deen Magee, Editor; Marion Jones. STANDING, left to right: Betsy Cook, Martha Sones, Elsie Jo Lizana, Billie Nelson.

SPEECH CLUB



SEATED, left to right: Janice Bankston, Elaine Necaise. STANDING, left to right: Sybil Buckley, Annelle Stuart, Martha Ann McBride, Martha Jene Magee, Mary Frances Brown.

WILDCAT STAFF



Judy Albritton, Robinette Arinder, Daniel Baker, Janice Bankston, Editor-in-Chief; Carol Bond, Mary Frances Brown, Sybil Buckley, Co-Editor; Kay Cabell, Ruby Nell Cook, Larry Crain, Boni Day, Freddie Day, Karen Davis, Peggy Dyar, Jane Fortenberry, J. O. Fortenberry, Carolyn Hall, Barbara Holden, Janice Kervin, Wanda King, Jeanelle Ladner, Ruby LaFrance, Sylvia Lee, Tony Lott, Martha Magee, Co-Editor; Bettye Markette, Bonney Markette, Martha McBride, Carla Mitchell, A. J. Necaize, Charles Owen, Gayle Parker, Sybil Pittman, James Pritchett, Jewel Rushing, Gay Rhodes, Sadie Simmons, Daniel Strahan, Photographer; Ann Stringer, Laura J. Stringfellow, Annelle Stuart, Mary Maude Summers, Alice Thurmon, Millie Usher, Sandra Watts, Mrs. T. P. Fornea, Faculty Advisor; Mr. G. McDonald, Faculty Photographer; Miss E. McSwain, Faculty Advisor.

THANKS TO OUR PHOTOGRAPHERS, MR. McDONALD AND DANIEL STRAHAN!

Y-TEENS



Kneeling, left to right, FIRST ROW: Maryland Humpherey, Barbara Bates, Betty Price, Judy Rawls, Ginger White, Jo Ann Burge, Edna Amacker, Sara Broadus, Sybil Pittman. SECOND ROW: Joyce Jones, Lillian Jones, Charlotte Harvey, Pat Lambert, Miss Dixie B. Clanton, Advisor. Standing, FIRST ROW: Kathleen Harris, Carol Holden, Sandra Watts, Carla Nell Mitchell. SECOND ROW: Kaye Nelson, Geraldine Holden, Laura Siringfellow, Frances Greer, Janie Stuart, Margaret Williamson, Jane McWilliams, Louise Moore, Nell Pullen, Theta Holston. THIRD ROW: Gail Amacker, Addean White, Mauvis Cooper, Judi McLaurin, Myra Odem, Christine Whitfield, Faith Thomas, Boni Day, Patsy Stewart, Juanita Moody.

Y.W.A.



STANDING, left to right: Charlotte Watts, Wanda King, Jane Fortenberry, Gwendolyn King, Carol Bond, Bonnie Page, Janice Kervin, Carolyn Hall, Mary Frances Brown, Charlotte Allen, Gay Rhodes, Martha Jane Magee, Peggy Dyar, Betsy Cook. SEATED, left to right: Carolyn Aultman, Robienette Arinder, Ruby Nell Cook, Mary Maude Summer, Beth Watts, Janice Bankston, Gayle Parker.

PHI THETA KAPPA



STANDING, left to right: Evelyn Holmes, Martha Magee, Thomas Malone, Larry Myrick, Bill Rainey, Ford Easton, Daniel Baker, Alice Ann Thurman, Miss Eunice McSwain, Jane Fortenberry. SEATED, left to right: Ruby LaFrance, Carolyn Ladner, Sybil Buckley, Annelle Stuart, Martha McBride. PICTURES INSERTED: Janice Bankston, Marvin McDonald.

ENTRE NOUS



STANDING, left to right: Raymond Bullock, Marvin McDonald, Mrs. T. P. Fornea, Donald Allgood, Richard Willett, Willis Maples, Gerald Aultman, Rex Applewhite, Henry Conerly, Bill Vernon, Charles Owen. SEATED, left to right: Samuel Harris, Jewel Rushing, Rose Marie Penton, Norma Deen Magee, Janice Kervin, Memory Lee Cole, Janice Bankston, Marian Jones, Mrs. Charlene White, Bob Hubbard. NOT PICTURED: Rodney Hubbard, Spencer Hudson, Barbara Holden, Dave Votaw.

WOMEN'S STUDENT GOVERNMENT



STANDING, left to right: Billy Nelson, Betty Sue Debrow, Charlotte Allen, Martha Brock, Mary Maude Summer, Gail Parker.
SEATED, left to right: Martha Jane Magee, Janice Bankston, Barbara Holden, Georgia Faye Buckley, Janice Kervin.

STUDENT COUNCIL



STANDING, left to right: Garth Gilpin, Bill Williams, Tony Davis, Michael Simmons, Mr. Graham McDonald. SEATED, left to right: Bill Rainey, Elmer Cook, Janice Kervin, Carolyn Ladner, Perry Baggett, Gene Gatwood.

NATIONAL EDUCATION ASSOCIATION



FIRST ROW: Sybil Buckley, Wanda King, George Dale, Perry Baggett, Pat Hitt. SECOND ROW: Charlotte Allen, Martha Sones, Charlotte Watts, Janice Kervin, A. J. Necaise. THIRD ROW: Bonnie Page, Mary Brown, Wynona Rester, Peggy Morgan, Jackie Koennan. FOURTH ROW: Janice Bankston, Mary E. Gerald, Ruby LaFrance, Mary Summer, Becky McKenzie. FIFTH ROW: Kathleen Seal, Charlotte Cook, Kay Cabell, Joe Chance, Carolyn Hall. SIXTH ROW: Emmett Smith, Martha Magee, Jane Fortenberry, Ford Easton, Ray Shaw. SEVENTH ROW: Dean R. L. Johnson, Joann Watts, Clifford Ladner.

FUTURE BUSINESS LEADERS OF AMERICA



FIRST ROW: Ruby Cook, Evelyn Holmes, Earl Hathorn, Fran Beard, Betsy Cook, Jim Kenny. SECOND ROW: Jan Craft, Patsy Thornhill, Peggy Avery, Lynda Powell, Carolyn Aultman, Maxine Hasson. THIRD ROW: Carolyn Engle, Pat Owen, Faye Singley, Linda Pierce, Joyce Reyer, Arlene Seal. FOURTH ROW: Carol Bond, Iris Martin, Pat Tanksley, Yvonne Patterson, A. J. Necaise, Tony Lott. FIFTH ROW: Mrs. T. D. Holden, Mr. Kenneth Martin, Mrs. Dolores Smith, Martha McBride, Alice Ann Thurman, Verlon Miller.

COLLEGE GIRLS' ENSEMBLE



Left to right: Janice Bankston, Felda Bullock, Wanda King, Wynona Rester, Mary Frances Brown, Charlotte Allen, Mary Emma Gerald, Robinette Arinder, Alice Ann Thurman.

HIGH SCHOOL GIRLS' ENSEMBLE



FRONT ROW, left to right: Priscilla Whitman, Betty Price, Patsy Stewart, Faith Thomas, Barbara Bates, Boni Day. BACK ROW, left to right: Sandra Watts, Carla Nell Mitchell, Carol Holden, Sara Bradus, Janie Stuart, Sue Wallace, Jane McWilliams, Sybil Pittman.

GLEE CLUB



TOP ROW: Joe Chance, Larry Haik, Mary Emma Gerald, Bob Hubbard, Anthony Tessitore, Norman Gerald, George Dale, Raymond Bullock, Ottis Raymond, Henry Conerly, Darris O'Quinn, Perry Baggett, Lynwood Oglebee, Hayward Barrett, Louie Anderson. THIRD ROW: Nell Pullen, Theta Holston, Mary Summer, Gwendolyn King, Peggy Morgan, Carolyn Hall, Janie Stuart, Pat Lambert, Barbara Bates, Christine Whitfield, Louis Moore, Frances Greer, Margaret Williamson, Kay Nelson, Betty Debrow, Bonnie Morris, Maryland Humphrey. SECOND ROW: Felda Bullock, Patricia Stuart, Mary Frances Brown, Sue Wallace, Sandra Watts, Wanda King, Betty Rose Pylant, Carla Mitchell, Charlotte Allen, Wynona Rester, Sara Broadus, Sybil Pittman, Betty Price, Jane Eaton, Myrna Odom. FIRST ROW: Faith Thomas, Judy McLaurin, Ginger White, Judy Rawls, Charlotte Harvey, Carol Holden, Jane McWilliams, Patsy Stewart, Boni Day, Priscilla Whitman, Janice Bankston, Alice Thurman, Linda Bourne, Dianne Lee, Edna Amacker, Robbinette Arinder. NOT PICTURED: Edwin Cameron, Kathie Harris, Gwen McCardle, Cathy Perry, Jewel Rushing, Ray Shaw, Brenda Stewart, Jerry Lee, Mavis Cooper.

ORCHESTRA



Saxophones: Woody Markert, Charlott Cook, Joseph G. Elio, Bob Hubbard. Trumpets: George Davis, Joe Chance, Tommy Hall, Mary F. Brown, Martha Brock. Trombones: Jim Kenney, Bobby Davis. Percussion: Robert McCullough. Bass Fiddle: James Verdigel. Soloists: Carla Nell Mitchell, Jo Ann Watts.

P.R.C.



Left to right: Robert McCullough, Davis Saulters, Ford Easton, Betty DeBrow, Bill Vernon, Mary Frances Brown, Tommy Hall, Charlotte Cook, Gail Parker, Janice Kervin, Joe Chance, George Davis, Michael Hannegan.



PATSY STEWART
Featurette



BILLIE NELSON
Head Majorette



BECKY PHILLIPS
Featurette

BAND



Left to right: Woody Markette, Bonny Markette, Martha Brock, Betty Markette, Bob Hubbard, Rose Marie Penton, Betty Rose Pylant, Gerald Aultman, Jim Kenny, Wayne Smith, Johnny Chance, Bobby Davis.

STRING OF PEARLS



Left to right: Jo Beth Bass, Boni Day, Dianne Lee, Joann Burge, Marcie Rushing, Martha Ann Catha, Carla Nell Mitchell, Judy Stewart, Martha Sones, Becky Phillips, Billie Nelson, Patsy Stewart, Elsie Jo Lizana, Butch Greer, Margaret Williamson, Carol Holden, Mary Longino, Joann Watts, Priscilla Whittman, Lynda Paul Borne, Alice Ann Thurman.

HOME ECONOMICS CLUB



STANDING, left to right: Jacqueline Koennen, Martha Nell Bullock, Pat Hitt, Gayle Parker, Lynda Entreklin. SEATED, left to right: Mary Frances Brown, Mary Maude Summer, Carolyn Hall, Miss Maggie Berry, Sponsor.

AGRICULTURAL CLUB



STANDING, left to right: J. W. Wheat, Mickey Bond, Gaberial Skipper, Jimmy Eiland, Roy Hawthorn, James Sones. SEATED, left to right: Mr. A. M. McBride, Sponsor; Ford Eastin, Doug Stewart, Darius O'Quinn.

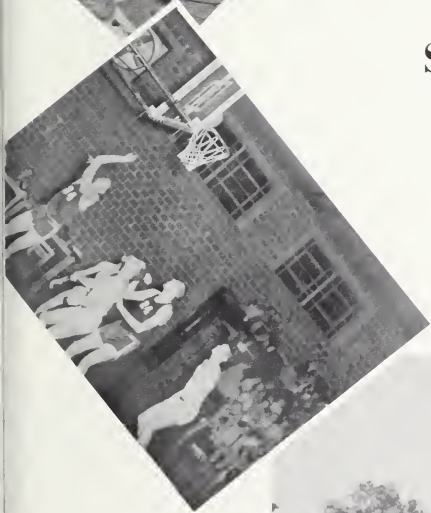
YEA-YEA!



WILDCATS!



SPORTS



FIGHT-FIGHT!



WILDCATS!

J. C. CHAMPS '59



P.R.C. WILDCATS



T. D. (DOBIE) HOLDEN
Coach of the Year



LEWIS MURRAY



JACK GALLAGHER

P.R.C. WILDCATS

Congratulations, Wildcats, for your outstanding accomplishments during the season. We are proud of your undefeated record as winners of the Mississippi State Junior College Championship and of the Hospitality Bowl.

We are equally proud of the seven players who were honored by being named to the ALL-STATE TEAM, the two who participated in the Little All-American Game in New Mexico, and Coach Holden for being named Mississippi Junior College "Coach of the Year."



BILLY JOHNSON
All-State Tackle



BOBBY WEAVER
All-State Quarterback



VERNON LINDSEY
All-State Tackle



JOEL SMITH
All-State Halfback



TOMMY EZELL
Honorable Mention
Halfback



JOE NEWTON
All-State Guard



NORMAN GERALD
All-State End



THOMAS MALONE
Honorable Mention
Guard



PAUL ALEXANDER
All-State Guard



BILL RAINEY
Tackle



PERRY BAGGETT
End



ELMER COOK
End



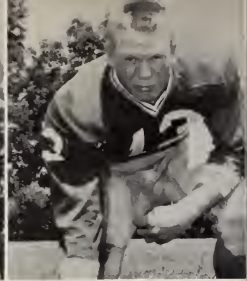
DANNY SIMMONS
Tackle



JERRY MIXON
Halfback



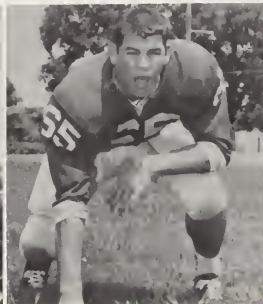
AMES KITCHENS
Guard



WAYNE POLK
Guard



JIMMY EILAND
Guard



GABRIEL SKIPPER
Guard



TERRY DAVIS
Guard



THOMAS WILLET
Back



LARRY ANDREWS
End



EARL WHITFIELD
Tackle



CHARLES AMACKER
Guard



LARRY HUNT
Back



BILLY MILLER
Fullback



NATHAN FARMER
Back



WAYNE WILLOUGHBY
Back



GENE GATWOOD
Back



JAMES BOONE
End



SYMON HARTZOG
Tackle



PAUL FARR
Back



ROBERT WALKER
Tackle



GREGORY MITCHELL
Tackle



THOMAS SMITH
Center



JERREL WILSON
Center



EMMETT SMITH
End



JOHN WILLIAMS
Tackle

SCORES

Hinds	0	P.R.C.	42
South West	8	P.R.C.	24
Co-Lin	0	P.R.C.	6
Scooba	0	P.R.C.	42
Perkinston	7	P.R.C.	24
Jones	14	P.R.C.	28
North West	0	P.R.C.	54
Decatur	8	P.R.C.	24
Sunflower	20	P.R.C.	20

HOSPITALITY BOWL

Henderson County	0	P.R.C.	30
------------------	---	--------	----



DOUGLAS STEWART
MANAGER

HOSPITALITY BOWL



P.R.C. BASKETBALL



STANDING: Jack Bush, Clyde Slatton, Edd Ginn, George Hayman, Elmer Cook, Dave Votaw, Sam Pace, Coach Gallagher. KNEELING: George Dale, Freddie Jermyn, J. T. Ladner, Jimmy Holden, Louie Lofton, Wendell Traylor, Farrell Holden, Grady Hickman.



DAVE VOTAW
Co-Captain
Forward



SAM PACE
Co-Captain
Forward



ELMER COOK
Forward-Center



GEORGE DALE
Guard



JACK BUSH
Guard



CLYDE SLATTON
Center



EDD GINN
Center



GEORGE HAYMAN
Forward



FARRELL HOLDEN
Guard



J. T. LADNER
Forward



JIMMY HOLDEN
Guard



LOUIE LOFTON
Guard



WENDELL TRAYLOR
Forward



FREDDIE JERMYN
Guard



GRADY HICKMAN
Guard



DOUG STEWART
HENRY HARDY
Manager and Assistant Manager

FRESHMEN CAGEMEN



KNEELING, from left to right: Jack Bush, Jimmy Holden, Louie Loftin, Farrell Holden, Grady Hickman. STANDING: Clyde Slatten, J. T. Ladner, Ed Ginn, George Hayman, Freddie Jermyn, Wendall Trailer. COACH: Jack Gallagher.



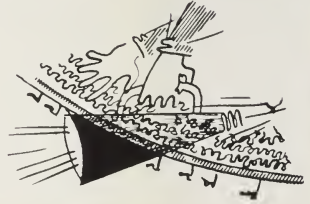
P.R.C. CHEERLEADERS



Left to right: Sylvia Lee, Patricia Stuart, Mary Emma Gerald, Martha Jane Magee, Annelle Stuart.



P.H.S. CHEERLEADERS



Left to right, FRONT ROW: Ginger White, Sandra Watts, Boni Day. SECOND ROW: Judy Rawls, Billy Frances Greer, Faith Thomas. THIRD ROW: Don Smith.

P.H.S. HORNETS



FIRST ROW, left to right: Coach C. B. Stuart, Manager Francis Morton, Billy Coleman, Bonny Stuart, Mike Kilby, Robert Baughman, James Pinkerton, Kenneth Spiers, Coach Doug Daniels. SECOND ROW: Junior Howard, Bobby Cochran, Tony Davis, Jimmy Forte, Louis Stines, Don Milner, Jerry Davis, Gerald Davis, Billy Spiers. THIRD ROW: Larry Williams, Robert Young, Jack Brock, Ronnie Davis, Lionel Amacker, Danny Williams, Ned Tucker, Walter Smith, Mickey Stuart. NOT PICTURED: James Seal, Butch Norris, Roy Whiddon, Clarence McNease.

SCORES

Carriere	13	P.H.S.	19
Lumberton	12	P.H.S.	24
Petal	13	P.H.S.	20
Long Beach	13	P.H.S.	14
Brooklyn	0	P.H.S.	13
Lucedale	12	P.H.S.	18
Bay High	6	P.H.S.	27
Purvis	0	P.H.S.	27
Leaksville	7	P.H.S.	20

A tip of the hat and a hand of applause are in order for the excellent performance by the Hornets in the Desota Conference of 1959-60. They were selected as the Champions for their undefeated and untied score.

Four of the players received recognition by being named to the All-Conference Team. They were Robert Young, Tony Davis, Larry Williams, and Bobby Cochran.

Coach Daniels was also chosen Desota Conference "Coach of the year" for his splendid supervision of the Hornet Squad.

HORNETTES



KNEELING, left to right: Mavis Cooper, Addean White, Judy McLaurin, Elizabeth Lee, Leatrice Corkern, Dianna Jo Burge, Carolyn Davis. STANDING, left to right: Betty Jo Parish, Butch Greer, Vangie Flynn, Pat Stringfellow, Judy Ann Walley, Geraldine Holden, Patricia Wheat, Coach Stuart.

SCORES

Carriere	40	P.H.S.	36	Pine, La.	21	P.H.S.	32
McNeil	29	P.H.S.	36	Hammond, La.	59	P.H.S.	47
Carriere	48	P.H.S.	45	Lumberton	25	P.H.S.	32
Lumberton	13 (B team)	P.H.S.	14	Perkinston	37	P.H.S.	41
Lumberton	34	P.H.S.	32	Carriere	44	P.H.S.	40
Leaksville	44	P.H.S.	34	Purvis	28	P.H.S.	39
Bogalusa	34	P.H.S.	51	McNeil	33	P.H.S.	34
Purvis	30	P.H.S.	52	Brooklyn	45	P.H.S.	36
Bogalusa	41	P.H.S.	50	Carriere	34	P.H.S.	27

HORNETS



KNEELING, left to right: Curtis Howard, Larry McPhail, Mike Kilby, Jimmy Forte, Norman Tynes, Michael Broome, Manager. STANDING, left to right: Billy Littleton, Joe Orr, Robert Young, Mac Smith, Larry Williams, Eugene Wheat, Coach Stuart.

SCORES

Carriere	34	P.H.S.....	29
McNeil	40	P.H.S.....	54
Picayune	21 (B team)	P.H.S.....	31
Picayune	29	P.H.S.....	56
McNeil	35	P.H.S.....	44
North Central	66	P.H.S.....	28
Lumberton	35	P.H.S.....	44
Lumberton	49	P.H.S.....	63
Sumrall	67	P.H.S.....	66
Bogalusa	48	P.H.S.....	51
Purvis	43	P.H.S.....	66
Bogalusa	58	P.H.S.....	45

Angie, La.	47	P.H.S.....	37
Lumberton	30 (B team)	P.H.S.....	36
Lumberton	56	P.H.S.....	82
Picayune	22 (B team)	P.H.S.....	24
Picayune	49	P.H.S.....	45
Perkinston	44	P.H.S.....	40
Carriere	45	P.H.S.....	39
Purvis	37	P.H.S.....	40
McNeil	44	P.H.S.....	57
Carriere	45	P.H.S.....	34
Carriere	42	P.H.S.....	29

HOMECOMING

Pearl River Junior College is among the oldest schools of its kind in the South and the pioneer Junior College in the state. In the year 1909 the school was organized as Pearl River County Agricultural High School. In 1922 college work was added and the institution subsequently reorganized under the name of Pearl River Junior College.



The celebration of the Golden Anniversary was a definite highlight in this year's Homecoming activities. High School graduates of the years 1911, 1912, 1913, 1914, and 1915 and College graduates of the years 1925 and 1955 were especially honored by the Alumni Banquet in Crosby Hall.

The "Wildcats" were victorious in their game with Perkinson Junior College, and the evening was climaxed by a dance in Shivers Gym.

We know that this Homecoming Celebration will long be remembered in the hearts of many.

ALUMNI

BANQUET



CLASS OF 1925

CLASS OF 1934

CLASS OF 1955



ROYALTY



Alumni President Mondell "Red" Ladner crowns Queen Barbara Holden



The Queen and her Court



Queen Barbara Holden; Escort Grady Hickman



Maid Carolyn Ladner; Escort George Dale



Maid Joann Watts; Escort Tommy Powell

HOMECOMING DANCE



SADIE HAWKINS DANCE



LIL' ABNER

DANNY SIMMONS

DAISY MAE

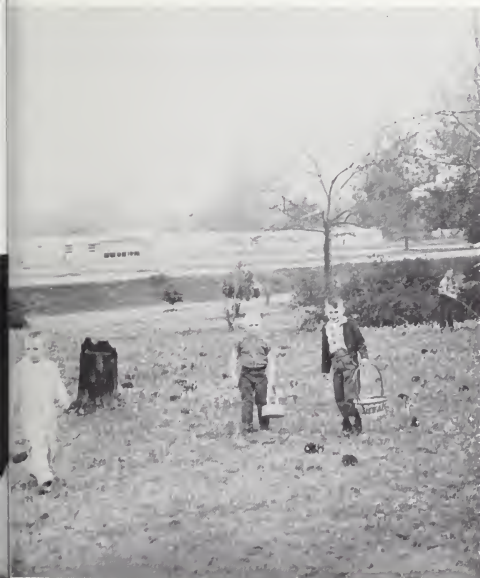
JEANELLE LADNER



CAMPUS CHILDREN



The Campus Women's Club sponsors annually an Easter egg hunt and a Christmas party for their children.



JUNIOR-SENIOR PROM



SENIOR DAY





ALMA MATER

O! Pearl River College, we're loyal to you.
To our Alma Mater we're faithful and true.
You stand on the hills with the tall swaying Pine.
The Symbol of all honor you'll be through all time.
You stand for the highest and we will uphold
Your standards and colors of maroon and gold;
And where'er we wander from these halls so dear,
The clear call of our college we will always hear.



JANICÉ BANKSTON
EDITOR-IN-CHIEF



SYBIL BUCKLEY
ASSISTANT EDITOR



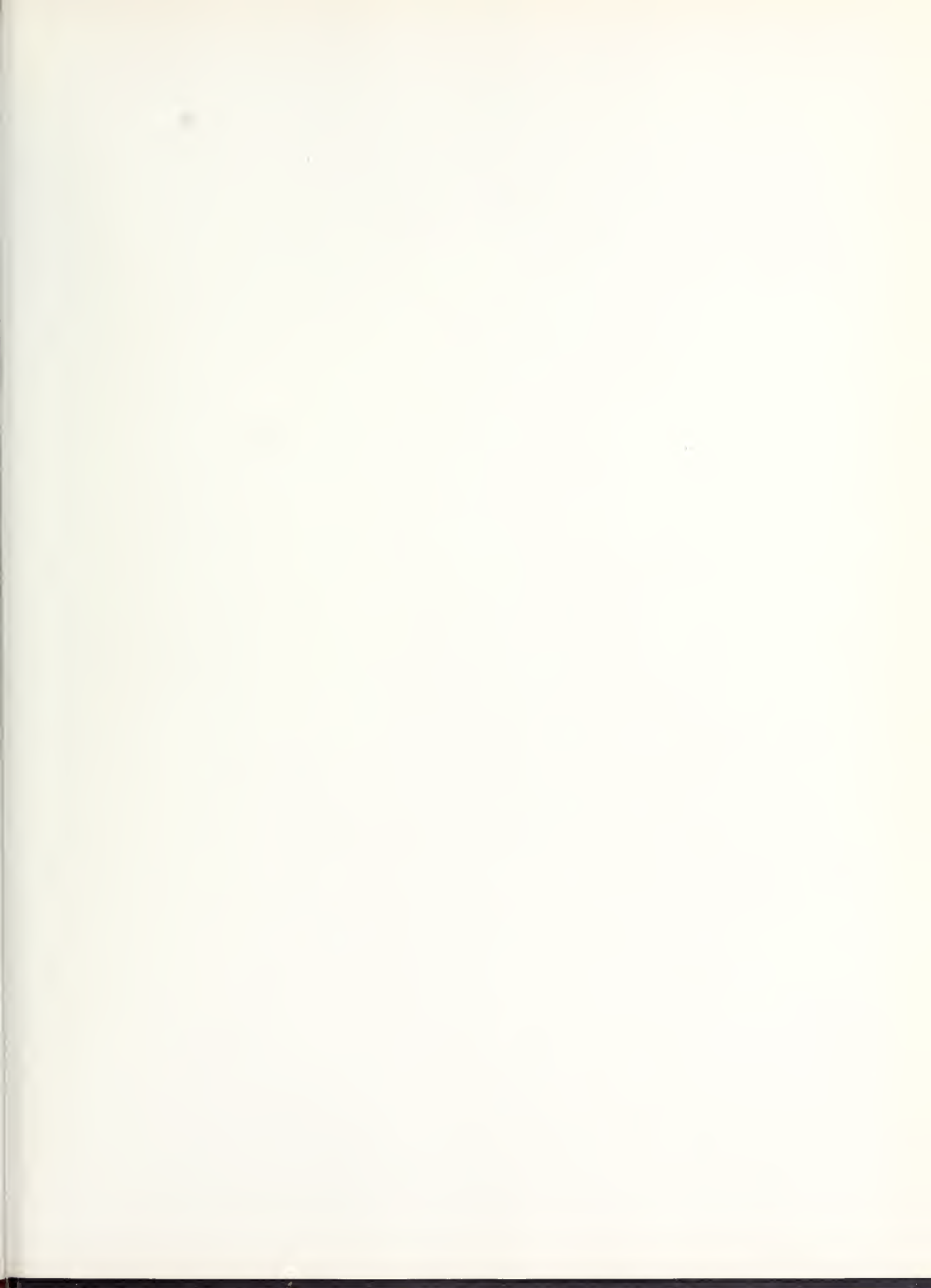
MARTHA JANE MAGEE
ASSISTANT EDITOR

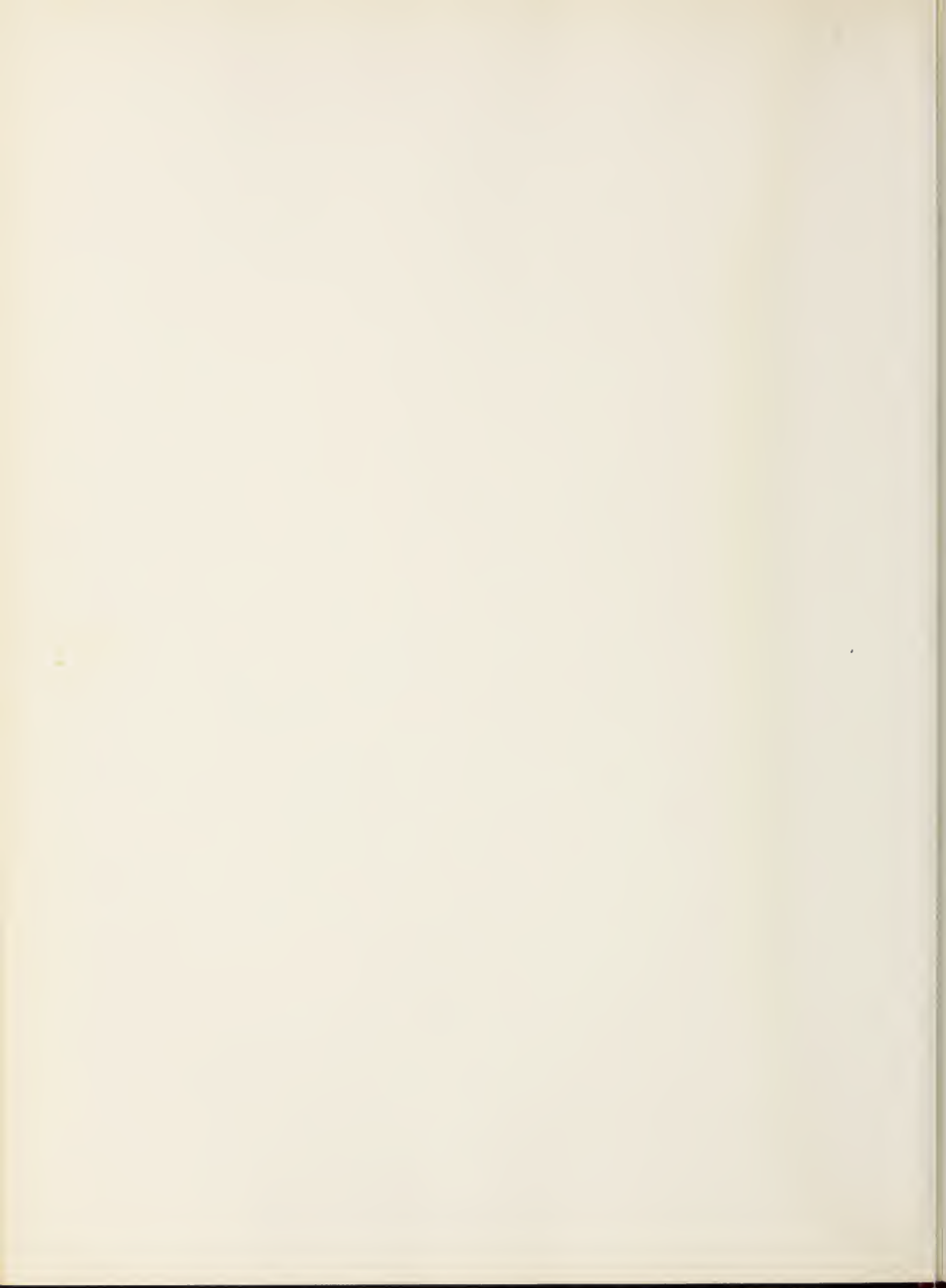






















 TAYLOR PUBLISHING COMPANY
"The World's Best Yearbooks Are Taylor-made"

YEARBOOKS /

